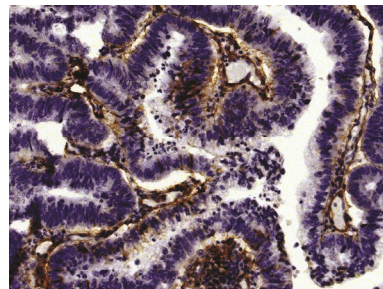




Goat Anti-Type IV Collagen

Cat. No.	Format	Size
1340-01	Purified (UNLB)	0.2 mg
1340-08	Biotin (BIOT)	0.2 mg
1340-30	Alexa Fluor® 488 (AF488)	0.2 mg



Human gastric cancer tissue was stained with Goat Anti-Type IV Collagen-UNLB (SB Cat. No. 1340-01) followed by Swine Anti-Goat IgG(H+L), Human/Rat/Mouse SP ads-HRP (SB Cat. No. 6300-05).

Description

Specificity	Reacts with conformational determinants on type IV collagen Referenced species reactivities include – <div> Human^{1,12,14,27,29,31,34,36} Chicken^{5,13,15} Porcine^{11,22,25} Mouse^{4,5,7,8,30,32} Chinchilla¹⁷ Rabbit^{5,6,14,20,23} Rat^{2,3,10,26,27,33,35} Equine^{18,28} Sheep²⁴ Bovine^{5,24} Guinea Pig¹⁴ Tree Shrew²¹ Canine^{9,19} Japanese Macaque¹⁶ </div>
Source	Pooled antisera from goats hyperimmunized with type IV collagen
Cross Adsorption	Collagen types I, II, III, V, and VI
Purification	Affinity chromatography on type IV collagen covalently linked to agarose

Applications

Quality tested applications include –

ELISA¹⁻³
FLISA

Other referenced applications include –

IHC-PS²⁻¹²
IHC-FS^{6,13-28}
ICC^{6,14,27,29,30}
EM^{5,31,32}
FC³⁶
WB^{2,4,7,8,10,14,27,29,32,33}
IP³²⁻³⁵

Working Dilutions

ELISA	BIOT conjugate	1:1,000 – 1:4,000
FLISA	AF488 conjugate	1:200 – 1:400
Other Applications	Since applications vary, you should determine the optimum working dilution for the product that is appropriate for your specific need.	

For Research Use Only. Not for Diagnostic or Therapeutic Use.

Handling and Storage

- The purified (UNLB) antibody is supplied as 0.2 mg of purified immunoglobulin in 0.5 mL of borate buffered saline, pH 8.2. *No preservatives or amine-containing buffer salts added.* Store at 2-8°C.
- The biotin (BIOT) and Alexa Fluor® 488 (AF488) conjugates are supplied as 0.2 mg in 0.5 mL of PBS/NaN₃. Store at 2-8°C.
- Protect fluorochrome-conjugated forms from light. Reagents are stable for the period shown on the label if stored as directed.

Warning

Some reagents contain sodium azide. Please refer to product specific (M)SDS.

References

1. Rasmussen LM, Hansen PR, Ledet T. Homocysteine and the production of collagens, proliferation and apoptosis in human arterial smooth muscle cells. *APMIS*. 2004;112:598-604. (ELISA, Human Reactivity)
2. Wang S, Wilkes MC, Leof EB, Hirschberg R. Imatinib mesylate blocks a non-Smad TGF- β pathway and reduces renal fibrogenesis in vivo. *FASEB J*. 2005;19:1-11. (ELISA, IHC-PS, WB, Rat Reactivity)
3. Ahn Y, Kim SK, Lee S, Ahn S, Kang SW, Chung J, et al. Renoprotective effect of Tanshinone IIA, an active component of *Salvia miltiorrhiza*, on rats with chronic kidney disease. *Phytother Res*. 2010;24:1886-92. (ELISA, IHC-PS, Rat Reactivity)
4. Nakanishi Y, Nogawa H, Hashimoto Y, Kishi J, Hayakawa T. Accumulation of collagen III at the cleft points of developing mouse submandibular epithelium. *Development*. 1988;104:51-9. (IHC-PS, WB, Mouse Reactivity)
5. Ishizaki M, Shimoda M, Wakamatsu K, Oguro T, Yamanaka N, Kao CW, et al. Stromal fibroblasts are associated with collagen IV in scar tissues of alkali-burned and lacerated corneas. *Curr Eye Res*. 1997;16:339-48. (IHC-PS, EM, Bovine, Chicken, Mouse, & Rabbit Reactivity)
6. Ishida I, Saika S, Ohnishi Y. Effect of minoxidil on rabbit lens epithelial cell behavior in vitro and in situ. *Graefes Arch Clin Exp Ophthalmol*. 2001;239:770-7. (IHC-PS, IHC-FS, ICC, Rabbit Reactivity)
7. Smeulders N, Woolf AS, Wilcox DT. Extracellular matrix protein expression during mouse detrusor development. *J Pediatr Surg*. 2003;38:1-12. (IHC-PS, WB, Mouse Reactivity)
8. Blush J, Lei J, Ju W, Silbiger S, Pullman J, Neugarten J. Estradiol reverses renal injury in Alb/TGF- β 1 transgenic mice. *Kidney Int*. 2004;66:2148-54. (IHC-PS, WB, Mouse Reactivity)
9. Serra M, Brazis P, Puigdemont A, Fondevila D, Romano V, Torre C, et al. Development and characterization of a canine skin equivalent. *Exp Dermatol*. 2007;16:135-42. (IHC-PS, Canine Reactivity)
10. Flynn ER, Marbury DC, Sawyer RT, Lee J, Teutsch C, Kauser K, et al. Amlodipine reduces inflammation despite promoting albuminuria in the streptozotocin-induced diabetic rat. *Nephron Extra*. 2012;2:205-18. (IHC-PS, WB, Rat Reactivity)
11. Mirmalek-Sani S, Orlando G, McQuillling JP, Pareta R, Mack DL, Salvatori M, et al. Porcine pancreas extracellular matrix as a platform for endocrine pancreas bioengineering. *Biomaterials*. 2013;34:5488-95. (IHC-PS, Porcine Reactivity)
12. Chaudhuri RK, Bojanowski K. Bakuchiol: a retinol-like functional compound revealed by gene expression profiling and clinically proven to have anti-aging effects. *Int J Cosmet Sci*. 2014;36:221-30. (IHC-PS, Human Reactivity)
13. Miyaishi O, Sakata K, Matsuyama M, Saga S. Distribution of the collagen binding heat-shock protein in chicken tissues. *J Histochem Cytochem*. 1992;40:1021-9. (IHC-FS, Chicken Reactivity)
14. Jerdan JA, Michels RG, Glaser BM. Extracellular matrix of newly forming vessels—an immunohistochemical study. *Microvasc Res*. 1991;42:255-65. (IHC-FS, ICC, WB, Guinea Pig, Human, & Rabbit Reactivity)
15. Tidball JG. Assembly of myotendinous junctions in the chick embryo: deposition of P68 is an early event in myotendinous junction formation. *Dev Biol*. 1994;163:447-56. (IHC-FS, Chicken Reactivity)
16. Sawada T, Inoue S. Basement membrane-like structures occurring on the surface of dental papilla mesenchymal cells during odontogenesis in the monkey *Macaca fuscata*. *Eur J Oral Sci*. 1998;106 Suppl 1:126-31. (IHC-FS, Japanese Macaque Reactivity)
17. Harada T, Juhn SK, Kim Y, Sakakura Y. Immunohistochemical distribution of extracellular matrix components and keratin in experimentally induced otitis media. *Ann Otol Rhinol Laryngol*. 1999;108:769-76. (IHC-FS, Chinchilla Reactivity)
18. Daamen WF, Hafmans T, Veerkamp JH, van Kuppevelt TH. Comparison of five procedures for the purification of insoluble elastin. *Biomaterials*. 2001;22:1997-2005. (IHC-FS, Equine Reactivity)
19. Passerini L, Bernasconi P, Baggi F, Confalonieri P, Cozzi F, Cornelio F, et al. Fibrogenic cytokines and extent of fibrosis in muscle of dogs with X-linked golden retriever muscular dystrophy. *Neuromuscul Disord*. 2002;12:828-35. (IHC-FS, Canine Reactivity)
20. Pollock GA, McKelvie PA, McCarty DJ, White JF, Mallari PL, Taylor HR. In vivo effects of fluoroquinolones on rabbit corneas. *Clin Experiment Ophthalmol*. 2003;31:517-21. (IHC-FS, Rabbit Reactivity)
21. Albon J, Farrant S, Akhtar S, Young R, Boulton ME, Smith G, et al. Connective tissue structure of the tree shrew optic nerve and associated ageing changes. *Invest Ophthalmol Vis Sci*. 2007;48:2134-44. (IHC-FS, Tree Shrew Reactivity)
22. Chun SY, Lim GJ, Kwon TG, Kwak EK, Kim BW, Atala A, et al. Identification and characterization of bioactive factors in bladder submucosa matrix. *Biomaterials*. 2007;28:4251-6. (IHC-FS, Porcine Reactivity)
23. Williams KK, McCartney MD, Rice RL, Wax MB, Hiddemen JW. The effects of moxifloxacin ophthalmic solution 0.5% or gatifloxacin ophthalmic solution 0.3% treatment on corneal wound healing in pigmented rabbits following anterior keratectomy. *Vet Ophthalmol*. 2008;11:327-34. (IHC-FS, Rabbit Reactivity)
24. White JF, Werkmeister JA, Hilbert SL, Ramshaw JA. Heart valve collagens: cross-species comparison using immunohistological methods. *J Heart Valve Dis*. 2010;19:766-71. (IHC-FS, Bovine & Sheep Reactivity)
25. Liu Y, Ding Y, Ma P, Wu Z, Duan H, Liu Z, et al. Enhancement of long-term proliferative capacity of rabbit corneal epithelial cells by embryonic stem cell conditioned medium. *Tissue Eng Part C Methods*. 2010;16:793-802. (IHC-FS, Porcine Reactivity)
26. Lee WH, Warrington JP, Sonntag WE, Lee YW. Irradiation alters MMP-2/TIMP-2 system and collagen type IV degradation in brain. *Int J Radiat Oncol Biol Phys*. 2012;82:1559-66. (IHC-FS, Rat Reactivity)
27. Papadimitriou A, Silva KC, Peixoto EB, Borges CM, Lopes de Faria JM, Lopes de Faria JB. Theobromine increases NAD⁺/Sirt-1 activity and protects the kidney under diabetic conditions. *Am J Physiol Renal Physiol*. 2015;308:F209-25. (IHC-FS, ICC, WB, Human & Rat Reactivity)
28. Baghi HB, Nauwynck HJ. Effect of equine herpesvirus type 1 (EHV-1) infection of nasal mucosa epithelial cells on integrin alpha 6 and on different components of the basement membrane. *Arch Virol*. 2016;161:103-10. (IHC-FS, Equine Reactivity)
29. Rosales MA, Silva KC, Duarte DA, Rossato FA, Lopes de Faria JB, Lopes de Faria JM. Endocytosis of tight junctions caveolin nitrosylation dependent is improved by cocoa via opioid receptor on RPE cells in diabetic conditions. *Invest Ophthalmol Vis Sci*. 2014;55:6090-100. (ICC, WB, Human Reactivity)
30. Schoors S, Bruning U, Missaen R, Queiroz KC, Borgers G, Elia I, et al. Fatty acid carbon is essential for dNTP synthesis in endothelial cells. *Nature*. 2015;520:192-7. (ICC, Mouse Reactivity)
31. Dingemans KP, Teeling P, Lagendijk JH, Becker AE. Extracellular matrix of the human aortic media: an ultrastructural histochemical and immunohistochemical study of the adult aortic media. *Anat Rec*. 2000;258:1-14. (EM, Human Reactivity)
32. Bhattacharya G, Kalluri R, Orten DJ, Kimberling WJ, Cosgrove D. A domain-specific usherin/collagen IV interaction may be required for stable integration into the basement membrane superstructure. *J Cell Sci*. 2004;117:233-42. (EM, WB, IP, Mouse Reactivity)
33. Sharma R, Sharma M, Reddy S, Savin VJ, Nagaria AM, Wiegmann TB. Chronically increased intrarenal angiotensin II causes nephropathy in an animal model of type 2 diabetes. *Front Biosci*. 2006;11:968-76. (WB, IP, Rat Reactivity)
34. Kuo H, Maslen CL, Keene DR, Glanville RW. Type VI collagen anchors endothelial basement membranes by interacting with type IV collagen. *J Biol Chem*. 1997;272:26522-9. (IP, Human Reactivity)
35. Rombouts K, Niki T, Wielant A, Hellemans K, Schuppan D, Kormoss N, et al. Effect of aldosterone on collagen steady state levels in primary and subcultured rat hepatic stellate cells. *J Hepatol*. 2001;34:230-8. (IP, Rat Reactivity)
36. Tabata T, Kawakatsu H, Maidji E, Sakai T, Sakai K, Fang-Hoover J, et al. Induction of an epithelial integrin α v β 6 in human cytomegalovirus-infected endothelial cells leads to activation of transforming growth factor- β 1 and increased collagen production. *Am J Pathol*. 2008;172:1127-40. (FC, Human Reactivity)

Alexa Fluor® 488, 647, 700 and Pacific Blue™ are provided under an agreement between Molecular Probes, Inc. (a wholly owned subsidiary of Invitrogen Corporation), and Southern Biotechnology Associates, Inc., and the manufacture, use, sale or import of this product may be subject to one or more U.S. patents, pending applications, and corresponding non-U.S. equivalents, owned by Molecular Probes, Inc. The purchase of this product conveys to the buyer the non-transferable right to use the purchased amount of the product and components of the product in research conducted by the buyer (whether the buyer is an academic or for-profit entity). The buyer cannot sell or otherwise transfer (a) this product (b) its components or (c) materials made using this product or its components to a third party or otherwise use this product or its components or materials made using this product or its components for Commercial Purposes. Commercial Purposes means any activity by a party for consideration and may include, but is not limited to: (1) use of the product or its components in manufacturing; (2) use of the product or its components to provide a service, information, or data; (3) use of the product or its components for therapeutic, diagnostic or prophylactic purposes; or (4) resale of the product or its components, whether or not such product or its components are resold for use in research. For information on purchasing a license to this product for any other use, contact Molecular Probes, Inc., Business Development, 29851 Willow Creek Road, Eugene, OR 97402, USA. Tel: (541) 465-8300. Fax: (541) 335-0504.

TB1340

14-Mar-16

Corporate Offices: 160 Oxmoor Blvd • Birmingham, AL 35209 • USA **Mailing Address:** P.O. Box 26221 • Birmingham, AL 35260 • USA

Tel: 205.945.1774 • U.S. and Canada: 800.722.2255 • **Fax:** 205.945.8768

Email: info@southernbiotech.com • **Website:** www.southernbiotech.com