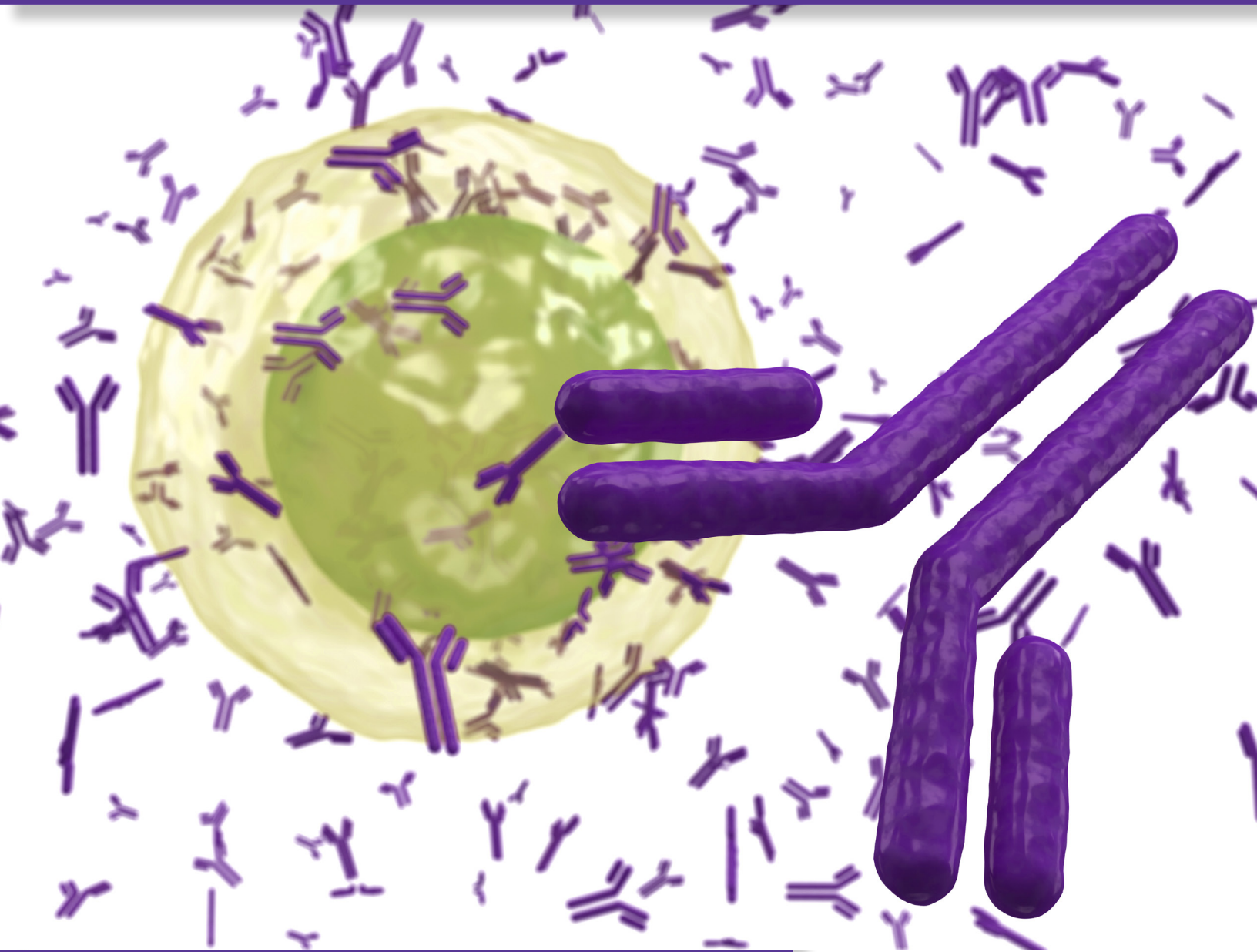


Human Cell Surface Antibodies



Quality Antibodies for Quality Research

SouthernBiotech

www.SouthernBiotech.com info@SouthernBiotech.com



Human Cell Surface Antibodies

Specificity	Clone	Cat. No.	Purified	LE/AF	Biotin	Pacific Blue™	Fluorescein	Alexa Fluor® 488	R-Phycoerythrin	Spectral Red®	PE/CY5.5	PE/CY7	PE/Texas Red®	Allophycocyanin	Alexa Fluor® 647	CY5	APC/CY5.5	APC/CY7	Alexa Fluor® 700
CD3	UCHT1	9515	✓	✓	✓	✓	✓	✓	✓	✓	✓	✓		✓	✓	✓		✓	✓
CD4	RFT4	9522	✓	✓	✓		✓	✓	✓	✓	✓	✓	✓	✓	✓	✓		✓	✓
CD5	UCHT2	9526	✓		✓	✓	✓		✓	✓				✓	✓				
CD8	UCHT4	9535	✓				✓		✓	✓									
CD8	RFT8	9536	✓	✓	✓	✓	✓	✓	✓	✓	✓	✓	✓	✓	✓	✓	✓	✓	✓
CD9	MM2/57	9310	✓	✓			✓		✓										
CD10 (CALLA)	CB-CALLA	9541	✓				✓		✓										
CD11a (Integrin α _L)	38	9320	✓	✓	✓		✓		✓	✓				✓					
CD11a (Integrin α _L)	I21/7*	1555	✓	✓	✓		✓		✓			✓							
CD11b (Integrin α _M)	ICRF44	9546	✓		✓	✓	✓	✓	✓	✓				✓	✓				
CD11b (Integrin α _M)	M1/70*	1561	✓	✓	✓	✓	✓	✓	✓	✓		✓		✓	✓	✓		✓	✓
CD11c (Integrin α _X)	3.9	9551	✓		✓	✓	✓	✓	✓					✓					✓
CD13	22A5	9556	✓				✓		✓										
CD14	UCHM-1	9560	✓		✓		✓		✓	✓									
CD14	61D3	9561	✓	✓	✓		✓	✓	✓	✓	✓	✓		✓	✓		✓	✓	✓
CD15	28	9565	✓		✓		✓		✓	✓									✓
CD16 (FcγRIII)	GRM1	9570	✓		✓		✓	✓	✓	✓					✓				✓
CD16 (FcγRIII)	3G8	9571	✓	✓	✓	✓	✓	✓	✓					✓					✓
CD19	SJ25-C1	9340	✓	✓	✓	✓	✓	✓	✓	✓	✓	✓	✓	✓	✓	✓	✓	✓	✓
CD19	SJ25-C1 - (F(ab') ₂)	9342	✓				✓		✓										
CD20	B-Ly1	9350	✓		✓	✓	✓	✓	✓	✓		✓		✓	✓			✓	✓
CD20	B-Ly1 - (F(ab') ₂)	9352	✓				✓		✓										
CD23 (FcεRII)	Tü1	9580	✓				✓		✓										
CD25 (IL-2Rα)	BC96	9582	✓			✓		✓	✓						✓				✓
CD26	134-2C2	9865	✓				✓		✓										
CD33	WM53	9590	✓	✓		✓	✓	✓	✓	✓	✓			✓	✓				✓
CD35	E11	9600	✓				✓		✓										
CD36	SMφ	9605	✓				✓												
CD42b (GPIbα)	MM2/174	9615	✓	✓	✓		✓		✓	✓				✓					
CD43 (Leukosialin)	DF-T1	9620	✓		✓		✓		✓	✓				✓					
CD44 (Pgp-1)	F10-44-2	9400	✓	✓	✓	✓	✓	✓	✓	✓		✓		✓	✓				✓
CD45 (LCA)	2D1	9624	✓			✓	✓	✓	✓					✓	✓				
CD45 (LCA)	F10-89-4	9625	✓		✓		✓		✓	✓	✓	✓	✓	✓		✓			✓
CD45R	RA3-6B2*	1665	✓	✓	✓	✓	✓	✓	✓	✓	✓	✓	✓	✓	✓	✓	✓	✓	✓
CD45RA	F8-11-13	9630	✓				✓		✓	✓									✓
CD49b (Integrin α ₂ , VLA-2α)	HAS-4	9426	✓				✓		✓										
CD49d (Integrin α ₄ , VLA-4α)	7.2	9432	✓				✓		✓										
CD49d (Integrin α ₄ , VLA-4α)	PS/2*	1520	✓		✓		✓		✓										

Human Cell Surface Antibodies

Specificity	Clone	Cat. No.	Purified	LE/AF	Biotin	Pacific Blue™	Fluorescein	Alexa Fluor® 488	R-Phycoerythrin	Spectral Red®	PE/CY5.5	PE/CY7	PE/Texas Red®	Allophycocyanin	Alexa Fluor® 647	CY5	APC/CY5.5	APC/CY7	Alexa Fluor® 700	
CD49f (Integrin α_6 , VLA-6 α)	4F10	9650	🧑				🧑		🧑											
CD51 (Integrin α_V)	13C2	9656	🧑				🧑		🧑											
CD54 (ICAM-1)	15.2	9441	🧑		🧑		🧑		🧑					🧑						
CD55 (DAF)	143-30	9661	🧑		🧑		🧑		🧑	🧑										
CD56 (NCAM)	MEM 188	9456	🧑		🧑	🧑	🧑	🧑	🧑	🧑	🧑									🧑
CD57 (NK-1)	NK-1	9665	🧑		🧑	🧑	🧑		🧑	🧑					🧑					
CD61 (Integrin β_3)	PM6/13	9470	🧑				🧑		🧑											
CD62E/CD62P	1.2B6	9500	🧑		🧑		🧑		🧑	🧑				🧑						🧑
CD71 (TfR)	RVS-10	9670	🧑	🧑	🧑		🧑		🧑	🧑				🧑						
CD74	LN2	9775	🧑	🧑	🧑		🧑		🧑											
CD79b (Ig β)	CB3-1	9710	🧑		🧑		🧑		🧑	🧑				🧑						
CD95 (Fas, Apo-1)	DX2	9730	🧑	🧑	🧑		🧑	🧑	🧑					🧑	🧑					
CD95 (Fas, Apo-1)	DX3	9735	🧑	🧑	🧑		🧑		🧑	🧑				🧑						
CD105 (Endoglin)	SN6	9811	🧑				🧑	🧑	🧑					🧑	🧑					
CD106 (VCAM-1)	1.G11B1	9510	🧑		🧑		🧑		🧑											
CD107a (LAMP-1)	H4A3	9835	🧑		🧑	🧑	🧑		🧑	🧑					🧑					
CD107b (LAMP-2)	H4B4	9840	🧑		🧑	🧑	🧑	🧑	🧑	🧑					🧑					🧑
CD138 (Syndecan-1)	SB55a	9824	🧑				🧑		🧑											
CD158e1 (KIR3DL1, NKB1)	DX9	9850	🧑					🧑	🧑					🧑	🧑					
CD178 (FasL)	SB93a	12115	🧑				🧑													
CD235a (Glycophorin A)	CMRF14	9861	🧑						🧑											
CD253 (TRAIL)	SB91a	11040	🧑		🧑															
CD253 (TRAIL)	SB91c	11050	🧑																	
CD282 (TLR2)	2B4A1	11000	🧑	🧑	🧑		🧑		🧑					🧑						
CD284 (TLR4)	1E11	11010	🧑																	
CD286 (TLR6)	3B6	11020	🧑																	
KLRG1 (MAFA)	2F1*	1807	🧑		🧑		🧑		🧑											

*Literature supports clone cross-reactivity to listed species, refer to technical bulletin for additional information

Corporate Offices

160 Oxmoor Blvd
Birmingham, AL 35209
USA

Mailing Address

PO Box 26221
Birmingham, AL 35260
USA

Tel 205.945.1774

Fax 205.945.8768

Email info@SouthernBiotech.com

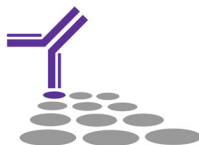
Technical Support technical@SouthernBiotech.com

Website www.SouthernBiotech.com

SouthernBiotech is ISO 9001:2008 Certified

SouthernBiotech

www.SouthernBiotech.com info@SouthernBiotech.com



Spectral Red® is a registered trademark of Southern Biotechnology Associates, Inc.
Pacific Blue™ is a trademark of Thermo Fisher Scientific, Inc. and its subsidiaries
Alexa Fluor® and Texas Red® are registered trademarks of
Thermo Fisher Scientific, Inc. and its subsidiaries
Cy® is a registered trademark of GE Healthcare
MM-HCD-03