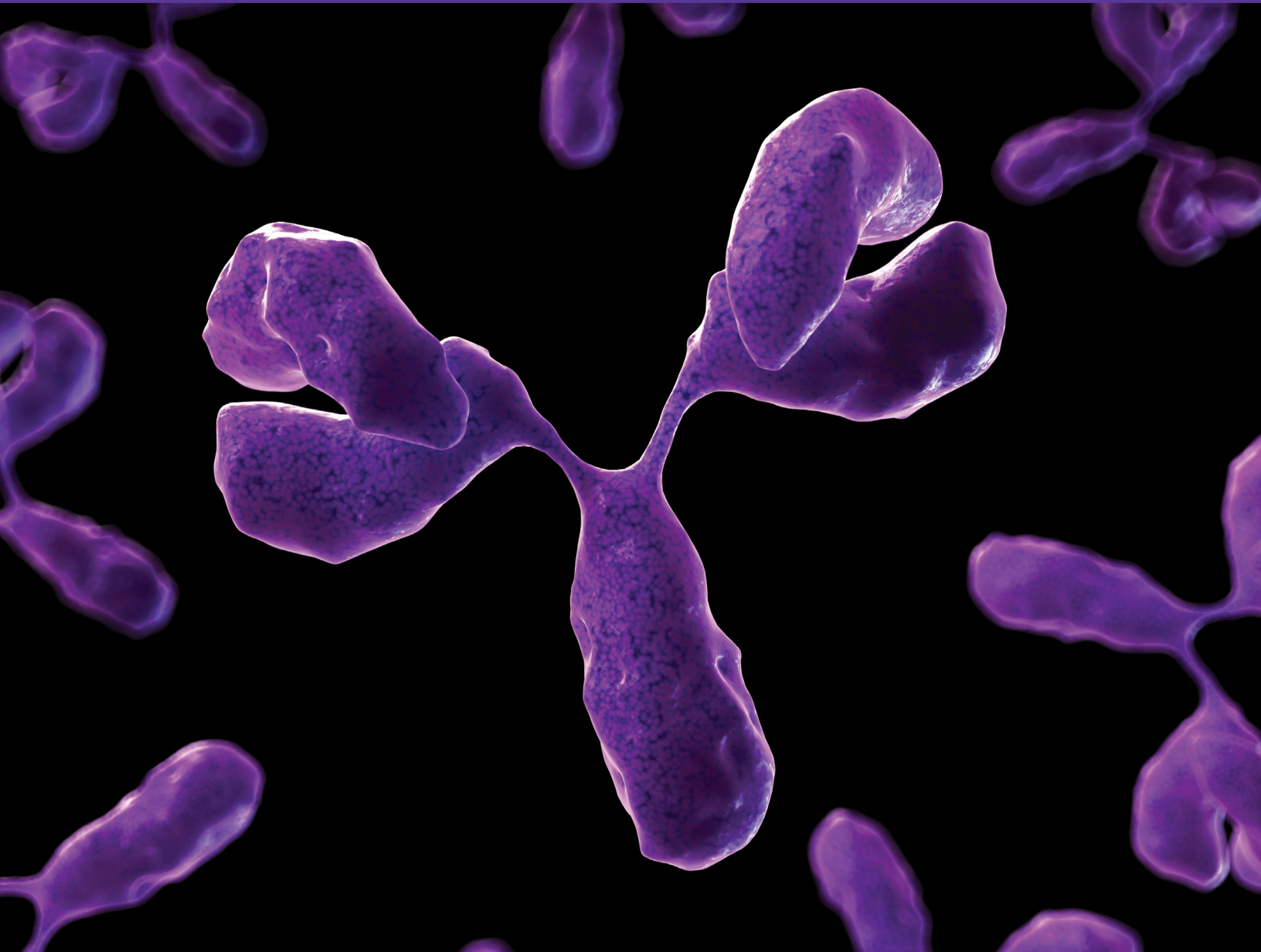


Polyclonal Secondary Antibodies



Quality Antibodies for Quality Research

SouthernBiotech

www.SouthernBiotech.com info@SouthernBiotech.com



Polyclonal Secondary Antibodies

Mouse

Specificity	Host	Cross Adsorption	Cat. No.	Purified	Horse radish Peroxidase	Alkaline Phosphatase	Biotin	β -Galactosidase	Fluorescein	Alexa Fluor® 488	R-Phycoerythrin	Spectral Red®	PE/CY5.5	PE/CY7	PE/Texas Red®	Rhodamine	Texas Red®	Alexa Fluor® 555	Allophycocyanin	Alexa Fluor® 647	CY5	APC/CY7
Ig	Goat	Human Ig	1010	+	+	+	+	+	+	+	+					+	+	+		+		
Ig	Goat F(ab') ₂	Human Ig	1012	+	+	+	+		+	+	+	+	+		+			+	+	+	+	+
IgA	Goat		1040	+	+	+	+		+	+	+					+	+	+		+		
IgE	Goat		1110	+	+	+	+		+	+	+											
IgG	Goat	Human Ig	1030	+	+	+	+	+	+	+	+					+	+	+		+	+	
IgG Fab	Goat		1015	+	+	+	+		+	+										+		
IgG Fc	Goat		1033	+	+	+	+		+	+										+		
IgG Fc	Goat	Hu/Bvn/Hrs SP	1013	+																	+	
IgG(H+L)	Donkey		6411	+	+	+	+		+	+									+	+		
IgG(H+L)	Donkey F(ab') ₂		6412	+	+		+		+	+									+	+		
IgG(H+L)	Goat		1036	+	+	+	+		+	+	+								+	+		
IgG(H+L)	Rabbit		6170	+	+	+	+		+	+										+		
IgG(H+L)	Rabbit F(ab') ₂		6120	+	+	+	+		+	+										+		
IgG(H+L)	Donkey	Human SP	6410	+	+	+	+		+	+	+								+	+		
IgG(H+L)	Goat	Human Ig	1031	+	+	+	+		+	+	+				+	+	+	+	+	+	+	+
IgG(H+L)	Goat F(ab') ₂	Human Ig	1032	+	+	+	+		+	+	+	+	+					+	+	+	+	+
IgG(H+L)	Rabbit	Human Ig	6175	+	+	+	+		+	+	+									+		
IgG(H+L)	Rabbit F(ab') ₂	Human Ig	6125	+	+	+	+		+	+	+									+		
IgG(H+L)	Goat	Rat Ig	1034	+	+	+	+		+		+					+	+	+				
IgG(H+L)	Goat	Hu/Bvn/Hrs SP	1037	+	+	+	+		+		+								+	+		
IgG(H+L)	Donkey	Multi-Species SP	6415	+	+	+	+		+	+									+	+		
IgG(H+L)	Goat	Multi-Species SP	1038	+	+	+	+		+	+	+								+	+		
IgG ₁	Goat		1071	+	+	+	+		+	+									+	+		
IgG ₁	Goat	Human Ig	1070	+	+	+	+		+	+	+					+	+	+	+	+	+	+
IgG ₁	Goat F(ab') ₂	Human Ig	1072	+			+		+	+	+								+	+	+	+
IgG ₁	Goat	Hu/Bvn/Hrs SP	1073	+	+	+	+		+	+									+	+	+	+
IgG _{2a}	Goat		1081	+	+	+	+		+	+									+	+		
IgG _{2a}	Goat	Human Ig	1080	+	+	+	+		+	+	+	+	+	+	+	+	+	+	+	+	+	+
IgG _{2a}	Goat F(ab') ₂	Human Ig	1082	+			+		+	+	+								+	+	+	+
IgG _{2a}	Goat	Hu/Bvn/Hrs SP	1083	+	+	+	+		+	+									+	+	+	+
IgG _{2b}	Goat		1091	+	+	+	+		+	+									+	+		
IgG _{2b}	Goat	Human Ig	1090	+	+	+	+		+	+	+	+	+	+	+	+	+	+	+	+	+	+
IgG _{2b}	Goat F(ab') ₂	Human Ig	1092	+			+		+	+	+								+	+	+	+
IgG _{2b}	Goat	Hu/Bvn/Hrs SP	1093	+	+	+	+		+	+									+	+	+	+
IgG _{2c}	Goat		1078	+	+	+	+		+	+									+	+		
IgG _{2c}	Goat	Human Ig	1079	+	+	+	+		+	+	+								+	+	+	+
IgG _{2c}	Goat	Hu/Bvn/Hrs SP	1077	+	+	+	+		+	+									+	+	+	+
IgG ₃	Goat		1101	+	+				+	+									+	+		

Polyclonal Secondary Antibodies

Mouse

Specificity	Host	Cross Adsorption	Cat. No.	Purified	Horseradish Peroxidase	Alkaline Phosphatase	Biotin	β -Galactosidase	Fluorescein	Alexa Fluor® 488	R-Phycoerythrin	Spectral Red®	PE/CY5.5	PE/CY7	PE/Texas Red®	Rhodamine	Texas Red®	Alexa Fluor® 555	Allophycocyanin	Alexa Fluor® 647	CY5	APC/CY7
IgG ₃	Goat	Human Ig	1100	🐭	🐭	🐭	🐭		🐭	🐭	🐭	🐭		🐭		🐭	🐭	🐭		🐭	🐭	🐭
IgG ₃	Goat F(ab) ₂	Human Ig	1102	🐭			🐭		🐭	🐭	🐭							🐭		🐭		
IgG ₃	Goat	Hu/Bvn/Hrs SP	1103	🐭	🐭	🐭	🐭															
IgM	Goat		1021	🐭	🐭	🐭	🐭		🐭	🐭	🐭					🐭	🐭	🐭		🐭		
IgM	Goat F(ab) ₂		1023	🐭																		
IgM	Goat	Human Ig	1020	🐭	🐭	🐭	🐭	🐭	🐭	🐭	🐭			🐭		🐭	🐭	🐭	🐭	🐭	🐭	🐭
IgM	Goat F(ab) ₂	Human Ig	1022	🐭	🐭		🐭	🐭	🐭	🐭	🐭							🐭		🐭		
Kappa	Goat		1050	🐭	🐭	🐭	🐭		🐭	🐭	🐭					🐭	🐭	🐭				
Kappa	Goat F(ab) ₂		1052	🐭	🐭																	
Lambda	Goat		1060	🐭	🐭	🐭	🐭	🐭	🐭	🐭	🐭					🐭	🐭	🐭				

Human

Specificity	Host	Cross Adsorption	Cat. No.	Purified	Horseradish Peroxidase	Alkaline Phosphatase	Biotin	β -Galactosidase	Fluorescein	Alexa Fluor® 488	R-Phycoerythrin	Spectral Red®	PE/CY5.5	PE/CY7	PE/Texas Red®	Rhodamine	Texas Red®	Alexa Fluor® 555	Allophycocyanin	Alexa Fluor® 647	CY5	APC/CY7
Ig	Goat		2010	👤	👤	👤	👤	👤	👤	👤	👤					👤	👤	👤		👤		
Ig	Goat F(ab) ₂		2012	👤			👤		👤	👤	👤							👤				
Ig Fab	Goat		2085	👤	👤	👤	👤		👤													
Ig Fc	Goat		2047	👤	👤	👤	👤															
IgA	Goat		2050	👤	👤	👤	👤		👤		👤					👤	👤	👤				
IgA	Goat F(ab) ₂		2052	👤			👤		👤		👤							👤		👤		
IgA	Goat	Ms/Bvn/Hrs SP	2053	👤	👤	👤																
IgD	Goat		2030	👤	👤	👤	👤		👤	👤	👤					👤	👤	👤		👤		
IgD	Goat F(ab) ₂		2032	👤			👤		👤	👤	👤							👤		👤		
IgG	Goat		2040	👤	👤	👤	👤	👤	👤	👤	👤					👤	👤	👤		👤		
IgG	Goat Fab		2041	👤	👤	👤	👤															
IgG	Goat F(ab) ₂		2042	👤	👤	👤	👤		👤		👤							👤				
IgG	Goat	Monkey Ig	2049	👤	👤		👤		👤	👤								👤		👤		
IgG	Goat	Mouse Ig	2044	👤	👤	👤																
IgG	Goat F(ab) ₂	Mouse Ig	2043	👤	👤		👤		👤		👤							👤				
IgG	Goat	Ms/Bvn/Hrs SP	2045	👤	👤	👤																
IgG Fc	Goat		2048	👤	👤	👤	👤		👤	👤	👤							👤		👤		
IgG Fc	Goat	Ms/Bvn/Hrs SP	2081	👤	👤	👤																
IgG Fc	Goat	Multi-Species SP	2014	👤	👤	👤	👤				👤							👤		👤		
IgG Fd	Goat		2046	👤	👤	👤			👤													
IgG(H+L)	Goat		2015	👤	👤	👤	👤		👤	👤								👤		👤		
IgG(H+L)	Goat	Ms/Bvn/Hrs SP	2016	👤	👤	👤	👤											👤		👤		

Polyclonal Secondary Antibodies

Human

Specificity	Host	Cross Adsorption	Cat. No.	Purified	Horseradish Peroxidase	Alkaline Phosphatase	Biotin	β -Galactosidase	Fluorescein	Alexa Fluor® 488	R-Phycoerythrin	Spectral Red®	PE/CY5.5	PE/CY7	PE/Texas Red®	Rhodamine	Texas Red®	Alexa Fluor® 555	Allophycocyanin	Alexa Fluor® 647	CY5	APC/CY7
IgG(H+L)	Goat	Multi-Species ads	2087	👤	👤	👤	👤															
IgG(H+L)	Rabbit		6140	👤	👤	👤	👤		👤		👤											
IgG(H+L)	Rabbit F(ab') ₂		6000	👤	👤	👤			👤	👤												
IgG(H+L)	Rabbit	Mouse Ig	6145	👤	👤	👤	👤		👤													
IgG(H+L)	Rabbit F(ab') ₂	Mouse Ig	6005	👤	👤	👤			👤													
IgG(H+L)	Rabbit	Ms/Bvn/Hrs SP	6146	👤																		
IgM	Goat		2020	👤	👤	👤	👤		👤	👤	👤					👤	👤	👤		👤		
IgM	Goat F(ab') ₂		2022	👤	👤		👤		👤	👤	👤							👤		👤		
IgM	Goat	Ms/Bvn/Hrs SP	2023	👤	👤	👤			👤													
Kappa	Goat		2060	👤	👤	👤	👤	👤	👤	👤	👤					👤	👤	👤		👤		
Kappa	Goat F(ab') ₂		2062	👤	👤		👤		👤	👤	👤							👤		👤		
Kappa	Goat	Mouse Ig	2061	👤	👤	👤	👤		👤		👤					👤	👤					
Kappa	Goat F(ab') ₂	Mouse Ig	2063	👤		👤	👤		👤		👤											
Lambda	Goat		2070	👤	👤	👤	👤		👤	👤	👤					👤	👤	👤		👤		
Lambda	Goat F(ab') ₂		2072	👤	👤		👤		👤		👤										👤	
Lambda	Goat	Mouse Ig	2071	👤	👤	👤	👤		👤		👤											
Lambda	Goat F(ab') ₂	Mouse Ig	2073	👤	👤		👤		👤	👤	👤											

Goat

Specificity	Host	Cross Adsorption	Cat. No.	Purified	Horseradish Peroxidase	Alkaline Phosphatase	Biotin	β -Galactosidase	Fluorescein	Alexa Fluor® 488	R-Phycoerythrin	Spectral Red®	PE/CY5.5	PE/CY7	PE/Texas Red®	Rhodamine	Texas Red®	Alexa Fluor® 555	Allophycocyanin	Alexa Fluor® 647	CY5	APC/CY7
IgG Fab	Rabbit		6022	🐐			🐐															
IgG Fc	Donkey		6460	🐐	🐐																	
IgG Fc	Rabbit		6163	🐐	🐐																	
IgG(H+L)	Rabbit		6160	🐐	🐐	🐐	🐐		🐐							🐐						
IgG(H+L)	Rabbit F(ab') ₂		6020	🐐	🐐	🐐			🐐													
IgG(H+L)	Rabbit	Human SP	6164	🐐	🐐	🐐	🐐		🐐													
IgG(H+L)	Rabbit F(ab') ₂	Human SP	6026	🐐	🐐	🐐			🐐													
IgG(H+L)	Donkey	Mouse/Rat SP	6420	🐐	🐐	🐐	🐐		🐐	🐐	🐐							🐐		🐐		
IgG(H+L)	Donkey F(ab') ₂	Mouse/Rat SP	6421	🐐	🐐	🐐			🐐													
IgG(H+L)	Swine	Hu/Rt/Ms SP	6300	🐐	🐐	🐐	🐐		🐐		🐐											
IgG(H+L)	Donkey	Multi-Species SP	6425	🐐	🐐		🐐		🐐									🐐		🐐		

Polyclonal Secondary Antibodies

Rat

Specificity	Host	Cross Adsorption	Cat. No.	Purified	Horse radish Peroxidase	Alkaline Phosphatase	Biotin	β -Galactosidase	Fluorescein	Alexa Fluor® 488	R-Phycoerythrin	Spectral Red®	PE/CY5.5	PE/CY7	PE/Texas Red®	Rhodamine	Texas Red®	Alexa Fluor® 555	Allophycocyanin	Alexa Fluor® 647	CY5	APC/CY7		
Ig	Goat	Mouse Ig	3010	🐭	🐭	🐭	🐭		🐭		🐭					🐭	🐭		🐭					
Ig	Goat Fab	Mouse Ig	3000	🐭	🐭		🐭																	
IgG	Goat		3030	🐭	🐭	🐭	🐭	🐭	🐭		🐭					🐭								
IgG	Goat F(ab') ₂		3032	🐭	🐭																			
IgG(H+L)	Rabbit		6180	🐭	🐭	🐭	🐭		🐭															
IgG(H+L)	Rabbit F(ab') ₂		6130	🐭	🐭	🐭			🐭							🐭								
IgG(H+L)	Sheep		6900	🐭																				
IgG(H+L)	Rabbit	Human Ig	6185	🐭	🐭	🐭	🐭		🐭															
IgG(H+L)	Rabbit F(ab') ₂	Human Ig	6135	🐭	🐭	🐭			🐭															
IgG(H+L)	Donkey	Mouse SP	6430	🐭	🐭	🐭	🐭		🐭	🐭	🐭							🐭		🐭				
IgG(H+L)	Donkey F(ab') ₂	Mouse SP	6431	🐭	🐭																			
IgG(H+L)	Goat	Mouse Ig	3050	🐭	🐭	🐭	🐭	🐭	🐭	🐭	🐭					🐭	🐭	🐭		🐭				
IgG(H+L)	Goat F(ab') ₂	Mouse Ig	3052	🐭			🐭		🐭		🐭	🐭	🐭		🐭		🐭							
IgG(H+L)	Mouse	Mouse SP	3053	🐭			🐭																	
IgG(H+L)	Goat	Ms/Hu Ig	3051	🐭	🐭		🐭		🐭															
IgM	Goat		3020	🐭	🐭	🐭	🐭		🐭	🐭	🐭					🐭	🐭							

Hamster

Specificity	Host	Cross Adsorption	Cat. No.	Purified	Horse radish Peroxidase	Alkaline Phosphatase	Biotin	β -Galactosidase	Fluorescein	Alexa Fluor® 488	R-Phycoerythrin	Spectral Red®	PE/CY5.5	PE/CY7	PE/Texas Red®	Rhodamine	Texas Red®	Alexa Fluor® 555	Allophycocyanin	Alexa Fluor® 647	CY5	APC/CY7		
IgG(H+L)	Goat		6060	🐭	🐭	🐭	🐭		🐭															
IgG(H+L)	Rabbit	Mouse Ig	6211	🐭	🐭						🐭													
IgG(H+L)	Goat	Mouse/Rat Ig	6061	🐭	🐭	🐭	🐭		🐭		🐭			🐭						🐭				
IgG(H+L)	Goat F(ab') ₂	Mouse/Rat Ig	6062	🐭			🐭		🐭		🐭													
IgG(H+L)	Rabbit	Mouse/Rat SP	6215	🐭	🐭		🐭		🐭		🐭													

Sheep

Specificity	Host	Cross Adsorption	Cat. No.	Purified	Horse radish Peroxidase	Alkaline Phosphatase	Biotin	β -Galactosidase	Fluorescein	Alexa Fluor® 488	R-Phycoerythrin	Spectral Red®	PE/CY5.5	PE/CY7	PE/Texas Red®	Rhodamine	Texas Red®	Alexa Fluor® 555	Allophycocyanin	Alexa Fluor® 647	CY5	APC/CY7		
IgG(H+L)	Rabbit		6150	🐏	🐏	🐏	🐏		🐏							🐏								
IgG(H+L)	Rabbit F(ab') ₂		6010	🐏	🐏	🐏			🐏															
IgG(H+L)	Rabbit	Human SP	6156	🐏	🐏	🐏	🐏		🐏															
IgG(H+L)	Rabbit F(ab') ₂	Human SP	6016	🐏	🐏	🐏			🐏															

Polyclonal Secondary Antibodies

Rabbit

Specificity	Host	Cross Adsorption	Cat. No.	Purified	Horse radish Peroxidase	Alkaline Phosphatase	Biotin	β -Galactosidase	Fluorescein	Alexa Fluor® 488	R-Phycoerythrin	Spectral Red®	PE/CY5.5	PE/CY7	PE/Texas Red®	Rhodamine	Texas Red®	Alexa Fluor® 555	Allophycocyanin	Alexa Fluor® 647	CY5	APC/CY7
Ig	Goat	Human Ig	4010	🐰	🐰	🐰	🐰	🐰	🐰		🐰					🐰	🐰	🐰		🐰		
IgG	Goat		4030	🐰	🐰	🐰	🐰		🐰	🐰	🐰					🐰		🐰		🐰		
IgG Fab	Goat		4040	🐰	🐰		🐰															
IgG Fab	Goat	Ms/Hu SP	4058	🐰	🐰																	
IgG Fc	Goat		4041	🐰	🐰		🐰		🐰													
IgG(H+L)	Donkey		6441	🐰	🐰	🐰	🐰		🐰	🐰								🐰		🐰		
IgG(H+L)	Goat		4055	🐰	🐰				🐰													
IgG(H+L)	Swine		6311	🐰																		
IgG(H+L)	Goat	Human Ig	4051	🐰	🐰																	
IgG(H+L)	Goat	Ms/Hu Ig	4050	🐰	🐰	🐰	🐰		🐰	🐰	🐰	🐰				🐰	🐰	🐰	🐰	🐰		
IgG(H+L)	Goat F(ab') ₂	Ms/Hu Ig	4052	🐰	🐰	🐰	🐰		🐰		🐰							🐰		🐰		
IgG(H+L)	Donkey	Ms/Rt/Hu SP	6440	🐰	🐰	🐰	🐰		🐰	🐰	🐰							🐰		🐰		
IgG(H+L)	Donkey F(ab') ₂	Ms/Rt/Hu SP	6446	🐰	🐰																	
IgG(H+L)	Goat	Ms/Rt/Hu Ig	4049	🐰	🐰	🐰																
IgG(H+L)	Goat F(ab') ₂	Ms/Rt/Hu Ig	4054	🐰	🐰		🐰		🐰													
IgG(H+L)	Mouse	Ms/Hu/Gt/Sh SP	4091	🐰			🐰															
IgG(H+L)	Swine	Ms/Rt/Hu/Gt SP	6310	🐰	🐰																	
IgG(H+L)	Donkey	Multi-Species SP	6442	🐰	🐰	🐰	🐰			🐰								🐰		🐰		
IgG(H+L)	Donkey F(ab') ₂	Multi-Species SP	6444	🐰	🐰	🐰	🐰													🐰		
IgG(H+L)	Swine	Multi-Species SP	6312	🐰																		
IgM	Goat		4020	🐰	🐰	🐰	🐰		🐰		🐰					🐰						
IgM	Goat	Multi-Species SP	4021	🐰																		

Polyclonal Secondary Antibodies

Miscellaneous Species

Specificity	Host	Cross Adsorption	Cat. No.	Purified	Horseradish Peroxidase	Alkaline Phosphatase	Biotin	β -Galactosidase	Fluorescein	Alexa Fluor® 488	R-Phycoerythrin	Spectral Red®	PE/CY 5.5	PE/CY7	PE/Texas Red®	Rhodamine	Texas Red®	Alexa Fluor® 555	Allophycocyanin	Alexa Fluor® 647	CY5	APC/CY7	
Bovine IgG(H+L)	Goat		6030																				
Canine IgG(H+L)	Goat		6070																				
Chicken IgY(H+L)	Goat		6100																				
Chicken IgY(H+L)	Goat	Multi-Species SP	6105																				
Donkey IgG(H+L)	Goat		6800																				
Equine IgG(H+L)	Goat		6040																				
Feline IgG(H+L)	Goat		6080																				
Guinea Pig IgG(H+L)	Goat		6090																				
Porcine IgG(H+L)	Goat		6050																				
Rhesus IgG(H+L)	Goat		6200																				
Turkey IgY(H+L)	Goat		6110																				

Corporate Offices

160 Oxmoor Blvd
Birmingham, AL 35209
USA

Mailing Address

PO Box 26221
Birmingham, AL 35260
USA

Tel 205.945.1774

Fax 205.945.8768

Email info@SouthernBiotech.com

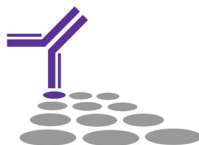
Technical Support technical@SouthernBiotech.com

Website www.SouthernBiotech.com

SouthernBiotech is ISO 9001:2008 Certified

SouthernBiotech

www.SouthernBiotech.com info@SouthernBiotech.com



Spectral Red® is a registered trademark of Southern Biotechnology Associates, Inc.
Pacific Blue™ is a trademark of Thermo Fisher Scientific, Inc. and its subsidiaries
Alexa Fluor® and Texas Red® are registered trademarks of
Thermo Fisher Scientific, Inc. and its subsidiaries
Cy® is a registered trademark of GE Healthcare
MM-PO2-05