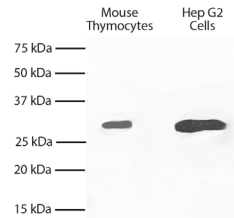




Mouse Anti-Bcl-x_L

Cat. No.	Format	Size
10035-01	Purified (UNLB)	0.1 mg



Total cell lysates from mouse thymocytes and Hep G2 cells were resolved by electrophoresis, transferred to PVDF membrane, and probed with Mouse Anti-Bcl-x_L-UNLB (SB Cat. No. 10035-01). Proteins were visualized using Goat Anti-Mouse IgG_{2a}, Human ads-HRP (SB Cat. No. 1080-05) secondary antibody and chemiluminescent detection.

Overview

Clone	2H12
Isotype	Mouse IgG _{2a} k
Immunogen	Bcl-x _L peptide (a.a. 3-14) common to mouse and human
Specificity	Mouse/Rat/Human Bcl-x _L
Alternate Name(s)	Apoptosis regulator Bcl-X, Bcl-2-like 1 protein, BCL2L1

Description

Bcl-x_L is a 29 kDa member of the Bcl-2 family of proteins that has been shown to block apoptosis. The monoclonal antibody 2H12 reacts with an N-terminal epitope between amino acids 3-14 that is common to mouse, human, and rat Bcl-x_L.

Applications

WB – Quality tested¹⁻⁷
 IP – Reported in literature^{6,8}
 FC – Reported in literature^{5,7,9}
 IHC-PS – Reported in literature^{4,10,11}
 ELISA – Reported in literature¹²

Working Dilutions

Immunoblotting	Purified (UNLB) antibody	≤ 2 µg/mL
Other Applications	Since applications vary, you should determine the optimum working dilution for the product that is appropriate for your specific need.	

For Research Use Only. Not for Diagnostic or Therapeutic Use.

Handling and Storage

- The purified (UNLB) antibody is supplied as 0.1 mg of purified immunoglobulin in 1.0 mL of borate buffered saline, pH 8.2. *No preservatives or amine-containing buffer salts added.* Store at 2-8°C.
- Reagent is stable for the period shown on the label if stored as directed.

References

1. Hsu Y, Youle RJ. Nonionic detergents induce dimerization among members of the Bcl-2 family. *J Biol Chem.* 1997;272:13829-34. (Immunogen, WB)
2. Hsu Y, Wolter KG, Youle RJ. Cytosol-to-membrane redistribution of Bax and Bcl-X_L during apoptosis. *Proc Natl Acad Sci USA.* 1997;94:3668-72. (WB)
3. Wolter KG, Hsu Y, Smith CL, Nechushtan A, Xi X, Youle RJ. Movement of Bax from the cytosol to mitochondria during apoptosis. *J Cell Biol.* 1997;139:1281-92. (WB)
4. Chu W, Aguilera NS, Wei MQ, Abbondanzo SL. Antiapoptotic marker Bcl-X_L, expression on Reed-Sternberg cells of Hodgkin's disease using a novel monoclonal marker, YTH-2H12. *Hum Pathol.* 1999;30:1065-70. (WB, IHC-PS)
5. Ferrero E, Belloni D, Contini P, Foglieni C, Ferrero ME, Fabbri M, et al. Transendothelial migration leads to protection from starvation-induced apoptosis in CD34⁺CD14⁺ circulating precursors: evidence for PECAM-1 involvement through Akt/PKB activation. *Blood.* 2003;101:186-93. (WB, FC)
6. Jeong S, Gaume B, Lee Y, Hsu Y, Ryu S, Yoon S, et al. Bcl-x_L sequesters its C-terminal membrane anchor in soluble, cytosolic homodimers. *EMBO J.* 2004;23:2146-55. (WB, IP)
7. Dodson LF, Boomer JS, Deppong CM, Shah DD, Sim J, Bricker TL, et al. Targeted knock-in mice expressing mutations of CD28 reveal an essential pathway for costimulation. *Mol Cell Biol.* 2009;29:3710-21. (WB, FC)
8. Pérez-Galán P, Roué G, Villamor N, Campo E, Colomer D. The BH3-mimetic GX15-070 synergizes with bortezomib in mantle cell lymphoma by enhancing Noxa-mediated activation of Bak. *Blood.* 2007;109:4441-9. (IP)
9. Boomer JS, Deppong CM, Shah DD, Bricker TL, Green JM. Cutting edge: A double-mutant knockin of the CD28 YMN and PYAP motifs reveals a critical role for the YMN motif in regulation of T cell proliferation and Bcl-x_L expression. *J Immunol.* 2014;192:3465-9. (FC)
10. Hyjek E, Chadburn A, Liu YF, Cesarman E, Knowles DM. BCL-6 protein is expressed in precursor T-cell lymphoblastic lymphoma and in prenatal and postnatal thymus. *Blood.* 2011;97:270-6. (IHC-PS)
11. Aebersold DM, Kollar A, Beer KT, Laissue J, Greiner RH, Djono V. Involvement of the hepatocyte growth factor/scatter factor receptor c-met and of Bcl-x_L in the resistance of oropharyngeal cancer to ionizing radiation. *Int J Cancer.* 2001;96:41-54. (IHC-PS)
12. Hackett GS. Intracellular delivery of therapeutic antibodies [dissertation]. Nottingham (United Kingdom): University of Nottingham; 2011. (ELISA)

TB10035

02-Feb-16

Corporate Offices: 160 Oxmoor Blvd • Birmingham, AL 35209 • USA **Mailing Address:** P.O. Box 26221 • Birmingham, AL 35260 • USA

Tel: 205.945.1774 • U.S. and Canada: 800.722.2255 • **Fax:** 205.945.8768

Email: info@southernbiotech.com • **Website:** www.southernbiotech.com