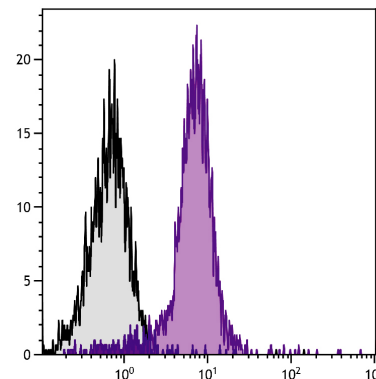




Mouse Anti-Human TLR2

Cat. No.	Format	Size
11000-01	Purified (UNLB)	0.1 mg
11000-02	Fluorescein (FITC)	100 tests
11000-08	Biotin (BIOT)	0.1 mg
11000-09	R-phycoerythrin (PE)	100 tests
11000-11	Allophycocyanin (APC)	100 tests
11000-14	Low Endotoxin, Azide-Free (LE/AF)	0.1 mg



Human peripheral blood monocytes were stained with Mouse Anti-Human TLR2-APC (SB Cat. No. 11000-11).

Overview

Clone	2B4A1
Isotype	Mouse (BALB/c) IgG _{2a} K
Immunogen	Recombinant TLR2
Specificity	Human/Canine TLR2
Alternate Name(s)	Toll-like receptor 2, CD282, TIL4

Description

The Toll-like receptor (TLR) family is comprised of type I transmembrane proteins characterized by an extracellular leucine-rich domain and a cytoplasmic tail that contains a conserved region call the Toll/IL-1 (TIR) domain. First discovered in *Drosophila*, TLRs recognize specific molecular patterns that are present in microbial components and respond to these components in order eliminate or limit invading microbes. TLR2 recognizes and is activated by components from a broad variety of microorganisms including lipoproteins from Gram-negative and Gram-positive bacteria, lipoteichoic acid from Gram-positive bacteria, lipoarabinomannan from mycobacteria, and zymosan from yeast. TLR2 has been reported to functionally associate with TLR1 and TLR6 in order to recognize various lipopeptides.

Applications

FC – Quality tested ¹⁻³

Working Dilutions

Flow Cytometry	Purified (UNLB) antibody	≤ 1 µg/10 ⁶ cells
	BIOT conjugate	≤ 1 µg/10 ⁶ cells
	FITC, PE, and APC conjugates	10 µL/10 ⁶ cells
	For flow cytometry, the suggested use of these reagents is in a final volume of 100 µL	

Other Applications	Since applications vary, you should determine the optimum working dilution for the product that is appropriate for your specific need.
---------------------------	--

For Research Use Only. Not for Diagnostic or Therapeutic Use.

Handling and Storage

- The purified (UNLB) antibody is supplied as 0.1 mg of purified immunoglobulin in 0.2 mL of borate buffered saline, pH 8.2. *No preservatives or amine-containing buffer salts added.* Store at 2-8°C.
- The fluorescein (FITC) conjugate is supplied as 100 tests in 1.0 mL of PBS/NaN₃. Store at 2-8°C.
- The biotin (BIOT) conjugate is supplied as 0.1 mg in 0.2 mL of PBS/NaN₃. Store at 2-8°C.
- The R-phycoerythrin (PE) and allophycocyanin (APC) conjugates are supplied as 100 tests in 1.0 mL of PBS/NaN₃ and a stabilizing agent. Store at 2-8°C. **Do not freeze!**
- The low endotoxin, azide-free (LE/AF) antibody is supplied as 0.5 mg purified immunoglobulin in 1.0 mL of PBS. Contains no preservative; handle under aseptic conditions. Store at 2-8°C or aliquot into smaller volumes and store at -20°C. Avoid multiple freeze / thaw cycles.
- Protect fluorochrome-conjugated forms from light. Reagents are stable for the period shown on the label if stored as directed.

Warning

Some reagents contain sodium azide. Please refer to product specific SDS.

References

1. Amorim IF, Silva SM, Figueiredo MM, Moura EP, Castro RS, Lima TK, et al. Toll receptors type-2 and CR3 expression of canine monocytes and its correlation with immunohistochemistry and xenodiagnosis in visceral leishmaniasis. PLoS One. 2011;6(11):e27679. (FC, Canine Reactivity)
2. Rolf N, Kariminia A, Iverson S, Reid GS, Schultz KR. Heterodimer-specific TLR2 stimulation results in divergent functional outcomes in B-cell precursor acute lymphoblastic leukemia. Eur J Immunol. 2015;45:1980-90. (FC)
3. Lashkari B, Anumba DO. Estradiol alters the immune-responsiveness of cervical epithelial cells stimulated with ligands of Toll-like receptors 2 and 4. PLoS One. 2017;12(3):e0173646. (FC)