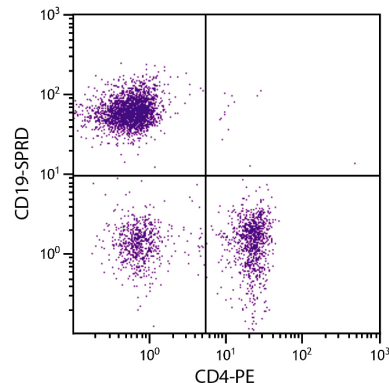




Rat Anti-Mouse CD19

Cat. No.	Format	Size
1575-01	Purified (UNLB)	0.5 mg
1575-02	Fluorescein (FITC)	0.5 mg
1575-02S	Fluorescein (FITC)	0.1 mg
1575-08	Biotin (BIOT)	0.5 mg
1575-09	R-phycoerythrin (PE)	0.1 mg
1575-09L	R-phycoerythrin (PE)	0.2 mg
1575-11	Allophycocyanin (APC)	0.1 mg
1575-13	Spectral Red [®] (SPRD)	0.1 mg
1575-14	Low Endotoxin, Azide-Free (LE/AF)	0.5 mg
1575-15	Cyanine 5 (CY5)	0.1 mg
1575-16	R-phycoerythrin-Cyanine 5.5 (PE/CY5.5)	0.1 mg
1575-17	R-phycoerythrin-Cyanine 7 (PE/CY7)	0.1 mg
1575-26	Pacific Blue [™] (PACBLU)	0.1 mg
1575-27	Alexa Fluor [®] 700 (AF700)	0.1 mg
1575-30	Alexa Fluor [®] 488 (AF488)	0.1 mg
1575-31	Alexa Fluor [®] 647 (AF647)	0.1 mg



BALB/c mouse splenocytes were stained with Rat Anti-Mouse CD19-SPRD (SB Cat. No. 1575-13) and Rat Anti-Mouse CD4-PE (SB Cat. No. 1540-09).

Overview

Clone	6D5
Isotype	Rat (Lewis) IgG _{2aκ}
Immunogen	Mouse CD19-expressing K562 human erythroleukemia cells
Specificity	Mouse CD19; Mr 95 kDa
Alternate Name(s)	B4

Description

CD19 is a monomeric transmembrane glycoprotein expressed at relatively constant levels throughout B cell development from early pro-B/pre-B cells (i.e. B220⁺/CD43⁺/HSA⁺) through fully differentiated B cell stages. Terminally differentiated plasma cells do not express CD19. In humans, the CD19 molecule on the surface of mature B cells associates with CD21 (CR-2) and CD81 (TAPA-1), and this multimolecular complex synergizes with surface immunoglobulin to provide signal transduction and promote cellular activation. All splenic and peritoneal IgM⁺ cells of both B-1 and B-2 lineages are CD19⁺, with B-1 cells expressing higher levels of CD19 than B-2 cells in these sites. Studies with CD19-deficient mice have suggested that this molecule may not be required for normal generation and maturation of B cells in the bone marrow. The monoclonal antibody 6D5 recognizes the same epitope as the published clone, 1D3.

Applications

FC – Quality tested⁵⁻¹¹
 IHC-FS – Reported in literature^{2,3}
 IP¹²
 Sep – Reported in literature⁴

Working Dilutions

Flow Cytometry	FITC, BIOT and AF488 conjugates	≤ 1 μg/10 ⁶ cells
	PE, APC, SPRD, CY5, PE/CY5.5 and PE/CY7 conjugates	≤ 0.2 μg/10 ⁶ cells
	PACBLU conjugate	≤ 0.3 μg/10 ⁶ cells
	AF647 and AF700 conjugates	≤ 0.1 μg/10 ⁶ cells
	For flow cytometry, the suggested use of these reagents is in a final volume of 100 μL	

Other Applications Since applications vary, you should determine the optimum working dilution for the product that is appropriate for your specific need.

For Research Use Only. Not for Diagnostic or Therapeutic Use.

Corporate Offices: 160 Oxmoor Blvd • Birmingham, AL 35209 • USA Mailing Address: P.O. Box 26221 • Birmingham, AL 35260 • USA

Tel: 205.945.1774 • U.S. and Canada: 800.722.2255 • Fax: 205.945.8768

Email: info@southernbiotech.com • Website: www.southernbiotech.com

Handling and Storage

- The purified (UNLB) antibody is supplied as 0.5 mg of purified immunoglobulin in 1.0 mL of borate buffered saline, pH 8.2. *No preservatives or amine-containing buffer salts added.* Store at 2-8°C.
- The fluorescein (FITC) conjugate is supplied as 0.5 mg or 0.1 mg in 1.0 mL of PBS/NaN₃. Store at 2-8°C.
- The biotin (BIOT) conjugate is supplied as 0.5 mg in 1.0 mL of PBS/NaN₃. Store at 2-8°C.
- The R-phycoerythrin (PE) conjugate is supplied as 0.1 mg in 1.0 mL or 0.2 mg in 2.0 mL of PBS/NaN₃ and a stabilizing agent. Store at 2-8°C. **Do not freeze!**
- The allophycocyanin (APC), Spectral Red[®] (SPRD), R-phycoerythrin-Cyanine 7 (PE/CY7) and R-phycoerythrin-Cyanine 5.5 (PE/CY5.5) conjugates are supplied as 0.1 mg in 1.0 mL of PBS/NaN₃ and a stabilizing agent. Store at 2-8°C. **Do not freeze!**
- The low endotoxin, azide-free (LE/AF) antibody is supplied as 0.5 mg of purified immunoglobulin in 1.0 mL of PBS. **Aliquot and store at or below -20°C.**
- The Cyanine 5 (CY5) conjugate is supplied as 0.1 mg in 1.0 mL of PBS/NaN₃. Store at 2-8°C.
- The Alexa Fluor[®] 488 (AF488), Alexa Fluor[®] 647 (AF647), Alexa Fluor[®] 700 (AF700) and Pacific Blue™ (PACBLU) conjugates are supplied as 0.1 mg in 0.2 mL of PBS/NaN₃. Store at 2-8°C.
- Protect fluorochrome-conjugated forms from light. Reagents are stable for the period shown on the label if stored as directed.

Warning

Some reagents contain sodium azide. Please refer to product specific (M)SDS.

References

1. Krop I, de Fougerolles AR, Hardy RR, Allison M, Schlissel MS, Fearon DT. Self-renewal of B-1 lymphocytes is dependent on CD19. *Eur J Immunol.* 1996;26:238-42. (Immunogen)
2. Xia RH, Yosef N, Ubogu EE. Clinical, electrophysiological and pathologic correlations in a severe murine experimental autoimmune neuritis model of Guillain-Barré syndrome. *J Neuroimmunol.* 2010;219:54-63. (IHC-FS)
3. Ubogu EE, Yosef N, Xia RH, Sheikh KA. Behavioral, electrophysiological, and histopathological characterization of a severe murine chronic demyelinating polyneuritis model. *J Peripher Nerv Syst.* 2012;17:53-61. (IHC-FS)
4. Lindsey JW. Dexamethasone-induced Ras-related protein 1 is a potential regulatory protein in B lymphocytes. *Int Immunol.* 2007;19:583-90. (Sep)
5. Kline GH, Hayden TA, Riegert P. The initiation of B cell clonal expansion occurs independently of pre-B cell receptor formation. *J Immunol.* 2001;167:5136-42. (FC)
6. Yan S, Rodriguez-Barbosa J, Pabst O, Beckmann JH, Brinkmann V, Förster R, et al. Protection of mouse small bowel allografts by FTY720 and costimulation blockade. *Transplantation.* 2005;79:1703-10. (FC)
7. Berberich S, Förster R, Pabst O. The peritoneal micromilieu commits B cells to home to body cavities and the small intestine. *Blood.* 2007;109:4627-34. (FC)
8. Im JS, Arora P, Bricard G, Molano A, Venkataswamy MM, Baine I, et al. Kinetics and cellular site of glycolipid loading control the outcome of natural killer T cell activation. *Immunity.* 2009;30:888-98. (FC)
9. You Y, Zhao H, Wang Y, Carter RH. Cutting edge: Primary and secondary effects of CD19 deficiency on cells of the marginal zone. *J Immunol.* 2009;182:7343-47. (FC)
10. He X, Nair A, Mekasha S, Alroy J, O'Connell CM, Ingalls RR. Enhanced virulence of Chlamydia muridarum respiratory infections in the absence of TLR2 activation. *PLoS One.* 2011;6(6):e20846. (FC)
11. Jacobsen J, Haabeth OW, Tveita AA, Schjetne KW, Munthe LA, Bogen B. Naive idiotope-specific B and T cells collaborate efficiently in the absence of dendritic cells. *J Immunol.* 2014;192:4174-83. (FC)
12. Personal communication (IP)

Spectral Red[®] is a registered trademark of Southern Biotechnology Associates, Inc.

Spectral Red[®] is a PE/CY5 tandem conjugate.

Cy[®] is a registered trademark of GE Healthcare.

Alexa Fluor[®] 488, 647, 700 and Pacific Blue™ are provided under an agreement between Molecular Probes, Inc. (a wholly owned subsidiary of Invitrogen Corporation), and Southern Biotechnology Associates, Inc., and the manufacture, use, sale or import of this product may be subject to one or more U.S. patents, pending applications, and corresponding non-U.S. equivalents, owned by Molecular Probes, Inc. The purchase of this product conveys to the buyer the non-transferable right to use the purchased amount of the product and components of the product in research conducted by the buyer (whether the buyer is an academic or for-profit entity). The buyer cannot sell or otherwise transfer (a) this product (b) its components or (c) materials made using this product or its components to a third party or otherwise use this product or its components or materials made using this product or its components for Commercial Purposes. Commercial Purposes means any activity by a party for consideration and may include, but is not limited to: (1) use of the product or its components in manufacturing; (2) use of the product or its components to provide a service, information, or data; (3) use of the product or its components for therapeutic, diagnostic or prophylactic purposes; or (4) resale of the product or its components, whether or not such product or its components are resold for use in research. For information on purchasing a license to this product for any other use, contact Molecular Probes, Inc., Business Development, 29851 Willow Creek Road, Eugene, OR 97402, USA, Tel: (541) 465-8300. Fax: (541) 335-0504.

TB1575
23-Aug-17

Corporate Offices: 160 Oxmoor Blvd • Birmingham, AL 35209 • USA **Mailing Address:** P.O. Box 26221 • Birmingham, AL 35260 • USA

Tel: 205.945.1774 • U.S. and Canada: 800.722.2255 • **Fax:** 205.945.8768

Email: info@southernbiotech.com • **Website:** www.southernbiotech.com