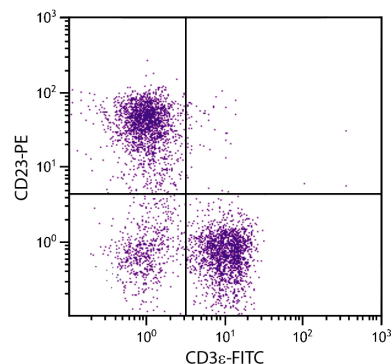




Rat Anti-Mouse CD23

Cat. No.	Format	Size
1585-01	Purified (UNLB)	0.5 mg
1585-02	Fluorescein (FITC)	0.5 mg
1585-08	Biotin (BIOT)	0.5 mg
1585-09	R-phycoerythrin (PE)	0.1 mg
1585-09L	R-phycoerythrin (PE)	0.2 mg
1585-11	Allophycocyanin (APC)	0.1 mg
1585-14	Low Endotoxin, Azide-Free (LE/AF)	0.5 mg
1585-17	R-phycoerythrin-Cyanine 7 (PE/CY7)	0.1 mg



BALB/c mouse splenocytes were stained with Rat Anti-Mouse CD23-PE (SB Cat. No. 1585-09) and Rat Anti-Mouse CD3 ϵ -FITC (SB Cat. No. 1535-02).

Overview

Clone	2G8
Isotype	Rat (LOU/M) IgG _{2a} κ
Immunogen	Fc ϵ R isolated from B cell lymphoma cell line M12.4.5
Specificity	Mouse CD23; Mr 45-49 kDa
Alternate Name(s)	Fc ϵ RII, BLAST-2, low affinity IgE receptor, Ly-42

Description

The CD23 antigen is the low affinity IgE Fc receptor, which is a 45-49 kDa protein with 38 and 28 kDa fragments. It is expressed on most mature, conventional B cells (but not on peritoneal CD5⁺ B cells) and can also be found on the surface of T cells, macrophages and platelets. It is distinct from the high affinity IgE receptors found on basophils and mast cells which mediate allergic reactions. The low affinity receptors are thought to play a role in isotype specific immunoregulation. The regulation of CD23 surface expression appears to be integral with the complex IgE system which involves interactions of cells, cytokines, antibodies and regulatory factors. CD23 has been described as a "membrane bound cytokine," in that the soluble cleavage products of CD23 are themselves able to act as cytokines *in vitro*.

Applications

FC – Quality tested ⁶⁻¹³
 IHC-FS – Reported in literature ²
 ELISA – Reported in literature ³⁻⁵

Working Dilutions

Flow Cytometry	Purified (UNLB) antibody	$\leq 1 \mu\text{g}/10^6$ cells
	FITC and BIOT conjugates	$\leq 1 \mu\text{g}/10^6$ cells
	PE, APC, and PE/CY7 conjugates	$\leq 0.1 \mu\text{g}/10^6$ cells
	For flow cytometry, the suggested use of these reagents is in a final volume of 100 μL .	

Other Applications Since applications vary, you should determine the optimum working dilution for the product that is appropriate for your specific need.

For Research Use Only. Not for Diagnostic or Therapeutic Use.

Handling and Storage

- The purified (UNLB) antibody is supplied as 0.5 mg of purified immunoglobulin in 1.0 mL of borate buffered saline, pH 8.2. *No preservatives or amine-containing buffer salts added.* Store at 2-8°C.
- The fluorescein (FITC) conjugate is supplied as 0.5 mg in 1.0 mL of PBS/NaN₃. Store at 2-8°C.
- The biotin (BIOT) conjugate is supplied as 0.5 mg in 1.0 mL of PBS/NaN₃. Store at 2-8°C.
- The R-phycoerythrin (PE) conjugate is supplied as 0.1 mg in 1.0 mL or 0.2 mg in 2.0 mL of PBS/NaN₃ and a stabilizing agent. Store at 2-8°C. **Do not freeze!**
- The allophycocyanin (APC) conjugate is supplied as 0.1 mg in 1.0 mL of PBS/NaN₃ and a stabilizing agent. Store at 2-8°C. **Do not freeze!**
- The low endotoxin, azide-free (LE/AF) antibody is supplied as 0.5 mg of purified immunoglobulin in 1.0 mL of PBS. **Aliquot and store at or below -20°C.**
- The R-phycoerythrin-Cyanine 7 (PE/CY7) conjugate is supplied as 0.1 mg in 1.0 mL of PBS/NaN₃ and a stabilizing agent. Store at 2-8°C. **Do not freeze!**
- Protect fluorochrome-conjugated forms from light. Reagents are stable for the period shown on the label if stored as directed.

Warning

Some reagents contain sodium azide. Please refer to product specific (M)SDS.

References

1. Rao M, Lee WT, Conrad DH. Characterization of a monoclonal antibody directed against the murine B lymphocyte receptor for IgE. *J Immunol.* 1987;138:1845-51. (Immunogen)
2. Gibb DR, Shikh ME, Kang D, Rowe WJ, El Sayed R, Cichy J, et al. ADAM10 is essential for Notch2-dependent marginal zone B cell development and CD23 cleavage in vivo. *J Exp Med.* 2010;207:623-35. (IHC-FS)
3. Pongratz G, McAlles JW, Conrad DH, Erbe RS, Haas KM, Sanders VM. The level of IgE produced by a B cell is regulated by norepinephrine in a p38 MAPK- and CD23-dependent manner. *J Immunol.* 2006;177:2926-38. (ELISA)
4. Kelly AE, Chen B, Woodward EC, Conrad DH. Production of a chimeric form of CD23 that is oligomeric and blocks IgE binding to the FcεRI. *J Immunol.* 1998;161:6696-6704. (ELISA)
5. Padro CJ, Shawler TM, Gormley MG, Sanders VM. Adrenergic regulation of IgE involves modulation of CD23 and ADAM10 expression on exosomes. *J Immunol.* 2013;191:5383-97. (ELISA)
6. Seagal J, Edry E, Keren Z, Leider N, Benny O, Machluf M, et al. A fail-safe mechanism for negative selection of isotype-switched B cell precursors is regulated by the Fas/FasL pathway. *J Exp Med.* 2003;198:1609-19. (FC)
7. Diamant E, Keren Z, Melamed D. CD19 regulates positive selection and maturation in B lymphopoiesis: lack of CD19 imposes developmental arrest of immature B cells and consequential stimulation of receptor editing. *Blood.* 2005;105:3247-54. (FC)
8. Bockamp E, Antunes C, Maringer M, Heck R, Presser K, Beilke S, et al. Tetracycline-controlled transgenic targeting from the SCL locus directs conditional expression to erythrocytes, megakaryocytes, granulocytes, and c-kit-expressing lineage-negative hematopoietic cells. *Blood.* 2006;108:1533-41. (FC)
9. Chen X, Esplin BL, Garrett KP, Welner RS, Webb CF, Kincade PW. Retinoids accelerate B lineage lymphoid differentiation. *J Immunol.* 2008;108:138-45. (FC)
10. Esplin BL, Welner RS, Zhang Q, Borghesi LA, Kincade PW. A differentiation pathway for B1 cells in adult bone marrow. *Proc Natl Acad Sci USA.* 2009;106:5773-8. (FC)
11. Barral P, Sánchez-Niño MD, van Rooijen N, Cerundolo V, Batista FD. The location of splenic NKT cells favours their rapid activation by blood-borne antigen. *EMBO J.* 2012;31:2378-90. (FC)
12. Rasmussen JW, Tam JW, Okan NA, Mena P, Furie MB, Thanassi DG, et al. Phenotypic, morphological, and functional heterogeneity of splenic immature myeloid cells in the host response to tularemia. *Infect Immun.* 2012;80:2371-81. (FC)
13. Ren W, Lagerstedt K, Grimsholm O, Stern A, Sun J, Fang Y, et al. Uncoupling of natural IgE production and CD23 surface expression levels. *PLoS One.* 2013;8(4):e62851. (FC)

Spectral Red® is a registered trademark of Southern Biotechnology Associates, Inc.

Spectral Red® is a PE/CY5 tandem conjugate.

Cy® is a registered trademark of GE Healthcare.