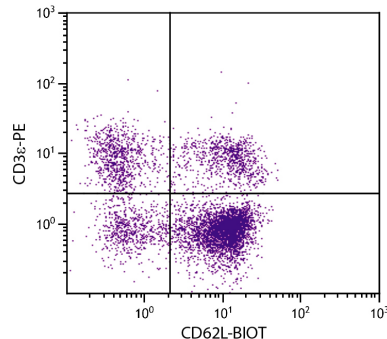




## Rat Anti-Mouse CD62L

Cat. No.	Format	Size
1705-01	Purified (UNLB)	0.5 mg
1705-02	Fluorescein (FITC)	0.5 mg
1705-08	Biotin (BIOT)	0.5 mg
1705-09	R-phycoerythrin (PE)	0.1 mg
1705-09L	R-phycoerythrin (PE)	0.2 mg
1705-11	Allophycocyanin (APC)	0.1 mg
1705-13	Spectral Red® (SPRD)	0.1 mg
1705-14	Low Endotoxin, Azide-Free (LE/AF)	0.5 mg
1705-17	R-phycoerythrin-Cyanine 7 (PE/CY7)	0.1 mg
1705-19	Allophycocyanin-Cyanine 7 (APC/CY7)	0.1 mg
1705-26	Pacific Blue™ (PACBLU)	0.1 mg
1705-27	Alexa Fluor® 700 (AF700)	0.1 mg
1705-30	Alexa Fluor® 488 (AF488)	0.1 mg
1705-31	Alexa Fluor® 647 (AF647)	0.1 mg



BALB/c mouse splenocytes were stained with Rat Anti-Mouse CD62L-BIOT (SB Cat. No. 1705-08) and Rat Anti-Mouse CD3 $\epsilon$ -PE (SB Cat. No. 1535-09) followed by Streptavidin-FITC (SB Cat. No. 7100-02).

### Overview

<b>Clone</b>	MEL-14
<b>Isotype</b>	Rat (Fisher) IgG <sub>2a</sub> K
<b>Immunogen</b>	C3H/eb cloned mouse B cell lymphoma 38C-13
<b>Specificity</b>	Mouse CD62L; Mr 74 kDa on lymphocytes and Mr 95 kDa on neutrophils
<b>Alternate Name(s)</b>	L-selectin, LECAM-1, LAM-1, Ly-22, Sell, Lnh, Lyam-1

### Description

CD62L, also known as L-selectin, is a type I transmembrane glycoprotein with lectin-like and epidermal growth factor-like domains. It binds to sialylated oligosaccharide determinants on high endothelial venules (HEV) in peripheral lymph nodes. In the mouse, CD62L is expressed on most thymocytes and on peripheral leukocytes, including B and T lymphocytes, neutrophils, monocytes, and eosinophils. This member of the selectin family of cell adhesion molecules appears to be required for lymphocyte homing to peripheral lymph nodes and for leukocyte extravasation at sites of inflammation. Expression of CD62L on lymphocytes and neutrophils is rapidly down-regulated upon cell activation and the level of CD62L expression, along with other markers, distinguishes naive T cells from effector/memory T cells. The monoclonal antibody MEL-14 blocks *in vitro* binding of lymphocytes to peripheral lymph node HEV and inhibits *in vivo* lymphocyte extravasation into peripheral lymph nodes and the late stages of leukocyte rolling.

### Applications

FC – Quality tested<sup>1-4,7-10</sup>  
 IHC-FS – Reported in literature<sup>2,3</sup>  
 IP – Reported in literature<sup>1,4</sup>  
 Block – Reported in literature<sup>1,4,6</sup>  
 Cyto – Reported in literature<sup>5</sup>

### Working Dilutions

<b>Flow Cytometry</b>	FITC and BIOT conjugates	≤ 2 μg/10 <sup>6</sup> cells
	PACBLU conjugate	≤ 0.3 μg/10 <sup>6</sup> cells
	PE, APC, SPRD, PE/CY7, APC/CY7, AF488, AF647, and AF700 conjugates	≤ 0.1 μg/10 <sup>6</sup> cells

For flow cytometry, the suggested use of these reagents is in a final volume of 100 μL

**Other Applications** Since applications vary, you should determine the optimum working dilution for the product that is appropriate for your specific need.

**For Research Use Only. Not for Diagnostic or Therapeutic Use.**

Corporate Offices: 160 Oxmoor Blvd • Birmingham, AL 35209 • USA Mailing Address: P.O. Box 26221 • Birmingham, AL 35260 • USA

Tel: 205.945.1774 • U.S. and Canada: 800.722.2255 • Fax: 205.945.8768

Email: [info@southernbiotech.com](mailto:info@southernbiotech.com) • Website: [www.southernbiotech.com](http://www.southernbiotech.com)

## Handling and Storage

---

- The purified (UNLB) antibody is supplied as 0.5 mg of purified immunoglobulin in 1.0 mL of borate buffered saline, pH 8.2. *No preservatives or amine-containing buffer salts added.* Store at 2-8°C.
- The fluorescein (FITC) conjugate is supplied as 0.5 mg in 1.0 mL of PBS/NaN<sub>3</sub>. Store at 2-8°C.
- The biotin (BIOT) conjugate is supplied as 0.5 mg in 1.0 mL of PBS/NaN<sub>3</sub>. Store at 2-8°C.
- The R-phycoerythrin (PE) conjugate is supplied as 0.1 mg in 1.0 mL or 0.2 mg in 2.0 mL of PBS/NaN<sub>3</sub> and a stabilizing agent. Store at 2-8°C. **Do not freeze!**
- The allophycocyanin (APC) conjugate is supplied as 0.1 mg in 1.0 mL of PBS/NaN<sub>3</sub> and a stabilizing agent. Store at 2-8°C. **Do not freeze!**
- The Spectral Red<sup>®</sup> (SPRD), R-phycoerythrin-Cyanine 7 (PE/CY7), and allophycocyanin-Cyanine 7 (APC/CY7) conjugates are supplied as 0.1 mg in 1.0 mL of PBS/NaN<sub>3</sub> and a stabilizing agent. Store at 2-8°C. **Do not freeze!**
- The low endotoxin, azide-free (LE/AF) antibody is supplied as 0.5 mg of purified immunoglobulin in 1.0 mL of PBS. **Aliquot and store at or below -20°C.**
- The Alexa Fluor<sup>®</sup> 488 (AF488), Alexa Fluor<sup>®</sup> 647 (AF647), Alexa Fluor<sup>®</sup> 700 (AF700), and Pacific Blue™ (PACBLU) conjugates are supplied as 0.1 mg in 0.2 mL of PBS/NaN<sub>3</sub>. Store at 2-8°C.
- Protect fluorochrome-conjugated forms from light. Reagents are stable for the period shown on the label if stored as directed.

## Warning

---

Some reagents contain sodium azide. Please refer to product specific (M)SDS.

## References

---

1. Gallatin WM, Weissman IL, Butcher EC. A cell-surface molecule involved in organ-specific homing of lymphocytes. *Nature*. 1983;304:30-4. (Immunogen, FC, IP, Block)
2. Reichert RA, Gallatin WM, Butcher EC, Weissman IL. A homing receptor-bearing cortical thymocyte subset: implications for thymus cell migration and the nature of cortisone-resistant thymocytes. *Cell*. 1984;38:89-99. (IHC-FS, FC)
3. Reichert RA, Jerabek L, Gallatin WM, Butcher EC, Weissman IL. Ontogeny of lymphocyte homing receptor expression in the mouse thymus. *J Immunol*. 1986;136:3535-42. (IHC-FS, FC)
4. Lewinsohn DM, Bargatze RF, Butcher EC. Leukocyte-endothelial cell recognition: evidence of a common molecular mechanism shared by neutrophils, lymphocytes, and other leukocytes. *J Immunol*. 1987;138:4313-21. (FC, IP, Block)
5. Seth A, Gote L, Nagarkatti M, Nagarkatti PS. T-cell-receptor-independent activation of cytolytic activity of cytotoxic T lymphocytes mediated through CD44 and gp90<sup>MEL-14</sup>. *Proc Natl Acad Sci USA*. 1991;88:7877-81. (Cyto)
6. Takedachi M, Qu D, Ebisuno Y, Oohara H, Joachims ML, McGee ST, et al. CD73-generated adenosine restricts lymphocyte migration into draining lymph nodes. *J Immunol*. 2008;180:6288-96. (Block)
7. Diamant E, Keren Z, Melamed D. CD19 regulates positive selection and maturation in B lymphopoiesis: lack of CD19 imposes developmental arrest of immature B cells and consequential stimulation of receptor editing. *Blood*. 2005;105:3247-54. (FC)
8. Duchesneau P, Gallagher E, Walcheck B, Waddell TK. Up-regulation of leukocyte CXCR4 expression by sulfatide: an L-selectin-dependent pathway on CD4<sup>+</sup> T cells. *Eur J Immunol*. 2007;37:2949-60. (FC)
9. Bradfield PF, Scheiermann C, Nourshargh S, Ody C, Luscinskas FW, Rainger GE, et al. JAM-C regulates unidirectional monocyte transendothelial migration in inflammation. *Blood*. 2007;110:2545-55. (FC)
10. Berge T, Grønningsæter IH, Lorvik KB, Abrahamson G, Granum S, Sundvold-Gjerstad V, et al. SH2D2A modulates T cell mediated protection to a B cell derived tumor in transgenic mice. *PLoS One*. 2012;7(10):e48239. (FC)

Spectral Red<sup>®</sup> is a registered trademark of Southern Biotechnology Associates, Inc.

Spectral Red<sup>®</sup> is a PE/CY5 tandem conjugate.

Cy<sup>®</sup> is a registered trademark of GE Healthcare.

Alexa Fluor<sup>®</sup> 488, 647, 700 and Pacific Blue™ are provided under an agreement between Molecular Probes, Inc. (a wholly owned subsidiary of Invitrogen Corporation), and Southern Biotechnology Associates, Inc., and the manufacture, use, sale or import of this product may be subject to one or more U.S. patents, pending applications, and corresponding non-U.S. equivalents, owned by Molecular Probes, Inc. The purchase of this product conveys to the buyer the non-transferable right to use the purchased amount of the product and components of the product in research conducted by the buyer (whether the buyer is an academic or for-profit entity). The buyer cannot sell or otherwise transfer (a) this product (b) its components or (c) materials made using this product or its components to a third party or otherwise use this product or its components or materials made using this product or its components for Commercial Purposes. Commercial Purposes means any activity by a party for consideration and may include, but is not limited to: (1) use of the product or its components in manufacturing; (2) use of the product or its components to provide a service, information, or data; (3) use of the product or its components for therapeutic, diagnostic or prophylactic purposes; or (4) resale of the product or its components, whether or not such product or its components are resold for use in research. For information on purchasing a license to this product for any other use, contact Molecular Probes, Inc., Business Development, 29851 Willow Creek Road, Eugene, OR 97402, USA, Tel: (541) 465-8300. Fax: (541) 335-0504.