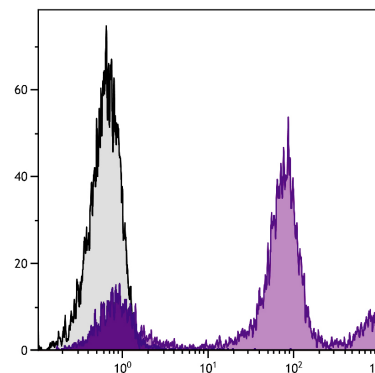




## Rat Anti-Mouse Ly-6C

Cat. No.	Format	Size
1760-01	Purified (UNLB)	0.5 mg
1760-02	Fluorescein (FITC)	0.5 mg
1760-08	Biotin (BIOT)	0.5 mg
1760-09	R-phycoerythrin (PE)	0.1 mg
1760-26	Pacific Blue™ (PACBLU)	0.1 mg
1760-27	Alexa Fluor® 700 (AF700)	0.1 mg
1760-30	Alexa Fluor® 488 (AF488)	0.1 mg
1760-31	Alexa Fluor® 647 (AF647)	0.1 mg



BALB/c mouse bone marrow cells were stained with Rat Anti-Mouse Ly-6C-PE (SB Cat. No. 1760-09).

### Overview

<b>Clone</b>	HK1.4
<b>Isotype</b>	Rat (Lewis) IgG <sub>2c</sub> κ
<b>Immunogen</b>	L3 cloned CTL cells
<b>Specificity</b>	Mouse Ly-6C; Mr 14-17 kDa
<b>Alternate Name(s)</b>	N/A

### Description

Ly-6C is a member of the Ly-6 multigene family of type V glycosphosphatidylinositol-anchored cell surface proteins. It is expressed on bone marrow cells, monocytes/macrophages, neutrophils, endothelial cells, and T-cell subsets. Mice with the Ly-6.2 allotype (e.g., AKR, C57BL, C57BR, C57L, DBA/2, PL, SJL, SWR, 129) have subsets of CD4<sup>+</sup>Ly-6C<sup>+</sup> and CD8<sup>+</sup>Ly-6C<sup>+</sup> cells while Ly-6.1 strains (e.g., A, BALB/c, CBA, C3H/He, DBA/1, NZB) have only CD8<sup>+</sup>Ly-6C<sup>+</sup> lymphocytes. Ly-6C may play a role in the development and maturation of lymphocytes.

### Applications

FC – Quality tested <sup>1-8</sup>  
 IHC-FS – Reported in literature <sup>2</sup>  
 Activ – Reported in literature <sup>1</sup>

### Working Dilutions

<b>Flow Cytometry</b>	Purified (UNLB) antibody	≤ 1 μg/10 <sup>6</sup> cells
	FITC, BIOT, and AF488 conjugates	≤ 1 μg/10 <sup>6</sup> cells
	PACBLU conjugate	≤ 0.3 μg/10 <sup>6</sup> cells
	PE conjugate	≤ 0.2 μg/10 <sup>6</sup> cells
	AF647 and AF700 conjugates	≤ 0.1 μg/10 <sup>6</sup> cells
	For flow cytometry, the suggested use of these reagents is in a final volume of 100 μL	

**Other Applications** Since applications vary, you should determine the optimum working dilution for the product that is appropriate for your specific need.

**For Research Use Only. Not for Diagnostic or Therapeutic Use.**

## Handling and Storage

---

- The purified (UNLB) antibody is supplied as 0.5 mg of purified immunoglobulin in 1.0 mL of borate buffered saline, pH 8.2. *No preservatives or amine-containing buffer salts added.* Store at 2-8°C.
- The fluorescein (FITC) conjugate is supplied as 0.5 mg in 1.0 mL of PBS/NaN<sub>3</sub>. Store at 2-8°C.
- The biotin (BIOT) conjugate is supplied as 0.5 mg in 1.0 mL of PBS/NaN<sub>3</sub>. Store at 2-8°C.
- The R-phycoerythrin (PE) conjugate is supplied as 0.1 mg in 1.0 mL of PBS/NaN<sub>3</sub> and a stabilizing agent. Store at 2-8°C. **Do not freeze!**
- The Alexa Fluor<sup>®</sup> 488 (AF488), Alexa Fluor<sup>®</sup> 647 (AF647), Alexa Fluor<sup>®</sup> 700 (AF700), and Pacific Blue™ (PACBLU) conjugates are supplied as 0.1 mg in 0.2 mL of PBS/NaN<sub>3</sub>. Store at 2-8°C.
- Protect fluorochrome-conjugated forms from light. Reagents are stable for the period shown on the label if stored as directed.

## Warning

---

Some reagents contain sodium azide. Please refer to product specific (M)SDS.

## References

---

1. Harvan WL, Lancki DW, Moldwin RL, Dialynas DP, Fitch FW. Characterization of an anti-Ly-6 monoclonal antibody which defines and activates cytolytic T lymphocytes. *J Immunol.* 1988;140:1034-42. (Immunogen, FC, Activ)
2. Flanagan K, Modrusan Z, Cornelius J, Chavali A, Kasman I, Komuves L, et al. Intestinal epithelial cell up-regulation of LY6 molecules during colitis results in enhanced chemokine secretion. *J Immunol.* 2008;180:3874-81. (FC, IHC-FS)
3. Chen CH, Grimbaldston MA, Tsai M, Weissman IL, Galli SJ. Identification of mast cell progenitors in adult mice. *Proc Natl Acad Sci USA.* 2005;102:11408-13. (FC)
4. Chapatte L, Colombetti S, Cerottini J, Lévy F. Efficient induction of tumor antigen-specific CD8<sup>+</sup> memory T cells by recombinant lentivectors. *Cancer Res.* 2006;66:1155-60. (FC)
5. Schröder J, Lüllmann-Rauch R, Himmerkus N, Pleines I, Nieswandt B, Orinska Z, et al. Deficiency of the tetraspanin CD63 associated with kidney pathology but normal lysosomal function. *Mol Cell Biol.* 2009;29:1083-94. (FC)
6. Sun Q, Jin H, Bond JS. Disruption of the meprin alpha and beta genes in mice alters homeostasis of monocytes and natural killer cells. *Exp Hematol.* 2009;37:346-56. (FC)
7. León B, del Hoyo GM, Parrillas V, Vargas HH, Sánchez-Mateos P, Longo N, et al. Dendritic cell differentiation potential of mouse monocytes: monocytes represent immediate precursors of CD8<sup>-</sup> and CD8<sup>+</sup> splenic dendritic cells. *Blood.* 2004;103:2668-76. (FC)
8. Liu W, Xiao X, Demirci G, Madsen J, Li XC. Innate NK cells and macrophages recognize and reject allogeneic non-self in vivo via different mechanisms. *J Immunol.* 2012;188:2703-11. (FC)

Spectral Red<sup>®</sup> is a registered trademark of Southern Biotechnology Associates, Inc.

Spectral Red<sup>®</sup> is a PE/CY5 tandem conjugate.

Cy<sup>®</sup> is a registered trademark of GE Healthcare.

Alexa Fluor<sup>®</sup> 488, 647, 700 and Pacific Blue™ are provided under an agreement between Molecular Probes, Inc. (a wholly owned subsidiary of Invitrogen Corporation), and Southern Biotechnology Associates, Inc., and the manufacture, use, sale or import of this product may be subject to one or more U.S. patents, pending applications, and corresponding non-U.S. equivalents, owned by Molecular Probes, Inc. The purchase of this product conveys to the buyer the non-transferable right to use the purchased amount of the product and components of the product in research conducted by the buyer (whether the buyer is an academic or for-profit entity). The buyer cannot sell or otherwise transfer (a) this product (b) its components or (c) materials made using this product or its components to a third party or otherwise use this product or its components or materials made using this product or its components for Commercial Purposes. Commercial Purposes means any activity by a party for consideration and may include, but is not limited to: (1) use of the product or its components in manufacturing; (2) use of the product or its components to provide a service, information, or data; (3) use of the product or its components for therapeutic, diagnostic or prophylactic purposes; or (4) resale of the product or its components, whether or not such product or its components are resold for use in research. For information on purchasing a license to this product for any other use, contact Molecular Probes, Inc., Business Development, 29851 Willow Creek Road, Eugene, OR 97402, USA, Tel: (541) 465-8300. Fax: (541) 335-0504.