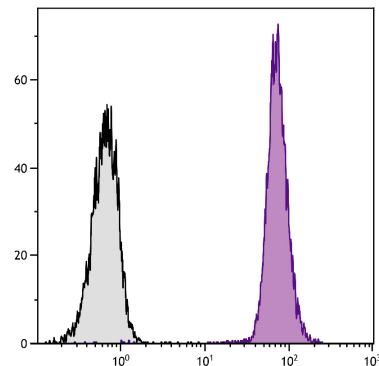




Mouse Anti-Mouse CD45.1

Cat. No.	Format	Size
1795-01	Purified (UNLB)	0.5 mg
1795-02	Fluorescein (FITC)	0.5 mg
1795-08	Biotin (BIOT)	0.5 mg
1795-09	R-phycoerythrin (PE)	0.1 mg
1795-09L	R-phycoerythrin (PE)	0.2 mg
1795-11	Allophycocyanin (APC)	0.1 mg
1795-13	Spectral Red® (SPRD)	0.1 mg
1795-15	Cyanine 5 (CY5)	0.1 mg
1795-16	R-phycoerythrin-Cyanine 5.5 (PE/CY5.5)	0.1 mg
1795-17	R-phycoerythrin-Cyanine 7 (PE/CY7)	0.1 mg
1795-19	Allophycocyanin-Cyanine 7 (APC/CY7)	0.1 mg
1795-26	Pacific Blue™ (PACBLU)	0.1 mg
1795-27	Alexa Fluor® 700 (AF700)	0.1 mg
1795-30	Alexa Fluor® 488 (AF488)	0.1 mg
1795-31	Alexa Fluor® 647 (AF647)	0.1 mg



SJL mouse splenocytes were stained with Mouse Anti-Mouse CD45.1-AF488 (SB Cat. No. 1795-30).

Overview

Clone	A20
Isotype	Mouse (A.SW) IgG _{2aκ}
Immunogen	SJL mouse thymocytes and splenocytes
Specificity	Mouse CD45.1; Mr 180-240 kDa
Alternate Name(s)	Ly-5.1, LCA, SJL, T200

Description

The CD45 antigen is an essential regulator of leukocyte activation and development and is now known to be a protein tyrosine phosphatase, e.g., CD45 is able to dephosphorylate the Src family of protein kinases. This activity is now known to be required for signal transduction induced by T and B cell antigen receptor engagement, cytokine signaling, and Fc receptor stimulation. The functional state of CD45 also has a pronounced effect on lymphocyte development. CD45 exists in multiple forms, such as the restricted variants (CD45R; see companion products 1660, 1665, 1675, 1685, and 1820) and as allelic forms CD45.1 (Ly-5.1) and CD45.2 (Ly-5.2). The former arises as a result of alternative splicing of different exons. The specificity of antibodies to CD45.1 and CD45.2 has been exploited in studies where resolution of donor and recipient cells is essential, such as in gene therapy or bone marrow transplantation. The monoclonal antibody A20 recognizes all mouse leukocytes expressing the CD45.1 allotype.

Applications

FC – Quality tested ^{3,5-9}
 IHC-FS – Reported in literature ^{3,4}
 IHC-PS – Reported in literature ²

Working Dilutions

Flow Cytometry	FITC, BIOT, and AF488 conjugates	≤ 1 μg/10 ⁶ cells
	PACBLU conjugate	≤ 0.3 μg/10 ⁶ cells
	PE, APC, SPRD, CY5, PE/CY5.5, PE/CY7, APC/CY7, AF647, and AF700 conjugates	≤ 0.2 μg/10 ⁶ cells
	For flow cytometry, the suggested use of these reagents is in a final volume of 100 μL	

Other Applications Since applications vary, you should determine the optimum working dilution for the product that is appropriate for your specific need.

For Research Use Only. Not for Diagnostic or Therapeutic Use.

Handling and Storage

- The purified (UNLB) antibody is supplied as 0.5 mg of purified immunoglobulin in 1.0 mL of borate buffered saline, pH 8.2. *No preservatives or amine-containing buffer salts added.* Store at 2-8°C.
- The fluorescein (FITC) conjugate is supplied as 0.5 mg in 1.0 mL of PBS/NaN₃. Store at 2-8°C.
- The biotin (BIOT) conjugate is supplied as 0.5 mg in 1.0 mL of PBS/NaN₃. Store at 2-8°C.
- The R-phycoerythrin (PE) conjugate is supplied as 0.1 mg in 1.0 mL or 0.2 mg in 2.0 mL of PBS/NaN₃ and a stabilizing agent. Store at 2-8°C. **Do not freeze!**
- The allophycocyanin (APC) conjugate is supplied as 0.1 mg in 1.0 mL of PBS/NaN₃ and a stabilizing agent. Store at 2-8°C. **Do not freeze!**
- The Spectral Red® (SPRD), R-phycoerythrin-Cyanine 5.5 (PE/CY5.5), R-phycoerythrin-Cyanine 7 (PE/CY7), and Allophycocyanin-Cyanine 7 (APC/CY7) conjugates are supplied as 0.1 mg in 1.0 mL of PBS/NaN₃ and a stabilizing agent. Store at 2-8°C. **Do not freeze!**
- The Cyanine 5 (CY5) conjugate is supplied as 0.1 mg in 1.0 mL of PBS/NaN₃. Store at 2-8°C.
- The Alexa Fluor® 488 (AF488), Alexa Fluor® 647 (AF647), Alexa Fluor® 700 (AF700), and Pacific Blue™ (PACBLU) conjugates are supplied as 0.1 mg in 0.2 mL of PBS/NaN₃. Store at 2-8°C.
- Protect fluorochrome-conjugated forms from light. Reagents are stable for the period shown on the label if stored as directed.

Warning

Some reagents contain sodium azide. Please refer to product specific SDS.

References

1. Shen F. Monoclonal antibodies to mouse lymphocyte differentiation alloantigens. In: Hämmerling GJ, Hämmerling U, Kearney JF, editors. Monoclonal antibodies and T-cell hybridomas: perspectives and technical advances. Amsterdam: Elsevier/North-Holland Biomedical Press; 1981. p. 25-31. (Immunogen)
2. Jodele S, Chantrain CF, Blavier L, Lutzko C, Crooks GM, Shimada H, et al. The contribution of bone marrow-derived cells to the tumor vasculature in neuroblastoma is matrix metalloproteinase-9 dependent. *Cancer Res.* 2005;65:3200-8. (IHC-PS)
3. Llodrá J, Angeli V, Liu J, Trogan E, Fisher EA, Randolph GJ. Emigration of monocyte-derived cells from atherosclerotic lesions characterizes regressive, but not progressive, plaques. *Proc Natl Acad Sci USA.* 2004;101:11779-84. (IHC-FS, FC)
4. Chen M, Lam BK, Kanaoka Y, Nigrovic PA, Audoly LP, Austen KF, et al. Neutrophil-derived leukotriene B₄ is required for inflammatory arthritis. *J Exp Med.* 2006;203:837-42. (IHC-FS)
5. Angeli V, Llodrá J, Rong JX, Satoh K, Ishii S, Shimizu T, et al. Dyslipidemia associated with atherosclerotic disease systemically alters dendritic cell mobilization. *Immunity.* 2004;21:561-74. (FC)
6. Gautreau L, Arcangeli M, Pasqualetto V, Joret A, Garcia-Cordier C, Mégrét J, et al. Identification of an IL-7-dependent pre-T committed population in the spleen. *J Immunol.* 2007;179:2925-35. (FC)
7. Gatza E, Rogers CE, Clouthier SG, Lowler KP, Tawara I, Liu C, et al. Extracorporeal photopheresis reverses experimental graft-versus-host disease through regulatory T cells. *Blood.* 2008;112:1515-21. (FC)
8. van Heijst JW, Gerlach C, Swart E, Sie D, Nunes-Alves C, Kerkhoven RM, et al. Recruitment of antigen-specific CD8⁺ T cells in response to infection is markedly efficient. *Science.* 2009;325:1265-69. (FC)
9. Gerlach C, van Heijst JW, Swart E, Sie D, Armstrong N, Kerkhoven RM, et al. One naive T cell, multiple fates in CD8⁺ T cell differentiation. *J Exp Med.* 2010;207:1235-46. (FC)

Spectral Red® is a registered trademark of Southern Biotechnology Associates, Inc.

Spectral Red® is a PE/CY5 tandem conjugate.

Cy® is a registered trademark of GE Healthcare.

Alexa Fluor® 488, 647, 700 and Pacific Blue™ are provided under an agreement between Molecular Probes, Inc. (a wholly owned subsidiary of Invitrogen Corporation), and Southern Biotechnology Associates, Inc., and the manufacture, use, sale or import of this product may be subject to one or more U.S. patents, pending applications, and corresponding non-U.S. equivalents, owned by Molecular Probes, Inc. The purchase of this product conveys to the buyer the non-transferable right to use the purchased amount of the product and components of the product in research conducted by the buyer (whether the buyer is an academic or for-profit entity). The buyer cannot sell or otherwise transfer (a) this product (b) its components or (c) materials made using this product or its components to a third party or otherwise use this product or its components or materials made using this product or its components for Commercial Purposes. Commercial Purposes means any activity by a party for consideration and may include, but is not limited to: (1) use of the product or its components in manufacturing; (2) use of the product or its components to provide a service, information, or data; (3) use of the product or its components for therapeutic, diagnostic or prophylactic purposes; or (4) resale of the product or its components, whether or not such product or its components are resold for use in research. For information on purchasing a license to this product for any other use, contact Molecular Probes, Inc., Business Development, 29851 Willow Creek Road, Eugene, OR 97402, USA, Tel: (541) 465-8300. Fax: (541) 335-0504.