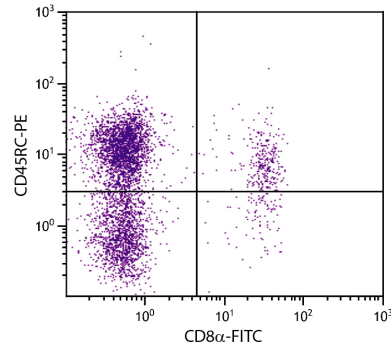




## Rat Anti-Mouse CD45RC

Cat. No.	Format	Size
1820-01	Purified (UNLB)	0.5 mg
1820-02	Fluorescein (FITC)	0.5 mg
1820-02S	Fluorescein (FITC)	0.1 mg
1820-08	Biotin (BIOT)	0.5 mg
1820-09	R-phycoerythrin (PE)	0.1 mg



BALB/c mouse splenocytes were stained with Rat Anti-Mouse CD45RC-PE (SB Cat. No. 1820-09) and Rat Anti-Mouse CD8α-FITC (SB Cat. No. 1550-02).

### Overview

<b>Clone</b>	C455.1F
<b>Isotype</b>	Rat IgG <sub>2a</sub> K
<b>Immunogen</b>	Unknown
<b>Specificity</b>	Mouse CD45RC; Mr 200-240 kDa
<b>Alternate Name(s)</b>	N/A

### Description

CD45RC represents an exon C-dependent isoform of CD45 glycoprotein. It is expressed at high density on all B lymphocytes, at intermediate density on most CD8<sup>+</sup> splenic T cells, and on two subpopulations of CD4<sup>+</sup> splenic T cells with high and low density of expression. CD45RC is also present on a small subset of thymocytes.

### Applications

FC – Quality tested

### Working Dilutions

<b>Flow Cytometry</b>	FITC and BIOT conjugates	$\leq 1 \mu\text{g}/10^6 \text{ cells}$
	PE conjugate	$\leq 0.2 \mu\text{g}/10^6 \text{ cells}$
	For flow cytometry, the suggested use of these reagents is in a final volume of 100 $\mu\text{L}$ .	
<b>Other Applications</b>	Since applications vary, you should determine the optimum working dilution for the product that is appropriate for your specific need.	

**For Research Use Only. Not for Diagnostic or Therapeutic Use.**

## Handling and Storage

---

- The purified (UNLB) antibody is supplied as 0.5 mg of purified immunoglobulin in 1.0 mL of borate buffered saline, pH 8.2. *No preservatives or amine-containing buffer salts added.* Store at 2-8°C.
- The fluorescein (FITC) conjugate is supplied as 0.5 mg or 0.1 mg in 1.0 mL of PBS/NaN<sub>3</sub>. Store at 2-8°C.
- The biotin (BIOT) conjugate is supplied as 0.5 mg in 1.0 mL of PBS/NaN<sub>3</sub>. Store at 2-8°C.
- The R-phycoerythrin (PE) conjugate is supplied as 0.1 mg in 1.0 mL of PBS/NaN<sub>3</sub> and a stabilizing agent. Store at 2-8°C. **Do not freeze!**
- Protect fluorochrome conjugated forms from light. Reagents are stable for the period shown on the label if stored as directed.

## Warning

---

Some reagents contain sodium azide. Please refer to product specific (M)SDS.