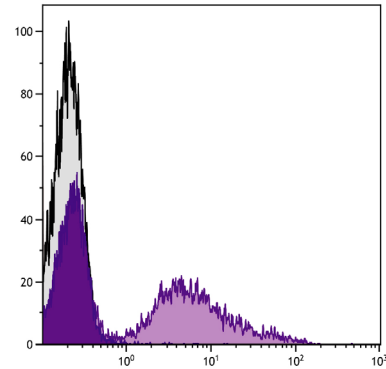




Mouse Anti-Rabbit RLA-DQ

Cat. No.	Format	Size
4080-01	Purified (UNLB)	0.5 mg
4080-02	Fluorescein (FITC)	0.5 mg
4080-08	Biotin (BIOT)	0.5 mg
4080-09	R-phycoerythrin (PE)	0.1 mg



Rabbit peripheral blood lymphocytes were stained with Mouse Anti-Rabbit RLA-DQ-BIOT (SB Cat. No. 4080-08) followed by Streptavidin-FITC (SB Cat. No. 7100-02).

Overview

Clone	2C4
Isotype	Mouse (BALB/c) IgG _{2a} K
Immunogen	Rabbit spleen cells
Specificity	Rabbit RLA-DQ
Alternate Name(s)	MHC Class II, leukocyte antigen

Description

The monoclonal antibody 2C4 reacts with RLA-DQ-transfected cells, but not with RLA-DR-transfected cells. In normal adult rabbits, the antibody reacts with 30-60% of peripheral blood leukocytes. It has also been reported that the antibody stains lymphocytes and macrophages in the spleen, lymphocytes in the thymic medulla and some cells in the cortex, Kupffer cells in the liver, and synovial lining cells (e.g., infiltrating macrophages) in inflamed synovium. DQ α transcripts have been detected in bone marrow and spleen and to a lesser extent in appendix, lymph nodes, and other organs.

Applications

FC – Quality tested ¹⁻¹¹
 IHC-FS – Reported in literature ^{5,12-21}
 IHC-PS – Reported in literature ²²
 IHC-WM – Reported in literature ²¹
 ICC – Reported in literature ^{7,14,23}
 ELISA – Reported in literature ⁷
 WB – Reported in literature ²⁴
 IP – Reported in literature ^{1,25,26}
 Block – Reported in literature ^{1,26}

Working Dilutions

Flow Cytometry	FITC and BIOT conjugates	$\leq 1 \mu\text{g}/10^6 \text{ cells}$
	PE conjugate	$\leq 0.2 \mu\text{g}/10^6 \text{ cells}$
	For flow cytometry, the suggested use of these reagents is in a final volume of 100 μL	
Other Applications	Since applications vary, you should determine the optimum working dilution for the product that is appropriate for your specific need.	

For Research Use Only. Not for Diagnostic or Therapeutic Use.

Handling and Storage

- The purified (UNLB) antibody is supplied as 0.5 mg of purified immunoglobulin in 1.0 mL of borate buffered saline, pH 8.2. *No preservatives or amine-containing buffer salts added.* Store at 2-8°C.
- The fluorescein (FITC) conjugate is supplied as 0.5 mg in 1.0 mL of PBS/NaN₃. Store at 2-8°C.
- The biotin (BIOT) conjugate is supplied as 0.5 mg in 1.0 mL of PBS/NaN₃. Store at 2-8°C.
- The R-phycoerythrin (PE) conjugate is supplied as 0.1 mg in 1.0 mL of PBS/NaN₃ and a stabilizing agent. Store at 2-8°C. **Do not freeze!**
- Protect fluorochrome-conjugated forms from light. Reagents are stable for the period shown on the label if stored as directed.

Warning

Some reagents contain sodium azide. Please refer to product specific SDS.

References

1. Lobel SA, Knight KL. The role of rabbit Ia molecules in immune functions as determined with the use of an anti-Ia monoclonal antibody. *Immunology*. 1984;51:35-43. (Immunogen, FC, IP, Block)
2. Spieker-Polet H, Sittisombut N, Yam P, Knight KL. Rabbit major histocompatibility complex. IV. Expression of major histocompatibility complex class II genes. *J Immunogenet*. 1990;17:123-32. (FC)
3. Sawasdikosol S, Hague BF, Zhao TM, Bowers FS, Simpson RM, Robinson M, et al. Selection of rabbit CD4 CD8⁺ T cell receptor-γ/δ cells by in vitro transformation with human T lymphotropic virus-I. *J Exp Med*. 1993;178:1337-45. (FC)
4. Pappo J, Mahlman RT. Follicle epithelial M cells are a source of interleukin-1 in Peyer's patches. *Immunology*. 1993;78:505-7. (FC)
5. Xu Q, Kleindienst R, Waitz W, Dietrich H, Wick G. Increased expression of heat shock protein 65 coincides with a population of infiltrating T lymphocytes in atherosclerotic lesions of rabbits specifically responding to heat shock protein 65. *J Clin Invest*. 1993;91:2693-702. (FC, IHC-FS)
6. Fukushima A, Ueno H. The relationship between HTLV-I-infected cell lines and uveitis. *Graefes Arch Clin Exp Ophthalmol*. 1995;233:231-5. (FC)
7. Kim CJ, Tomoyoshi T, Seto A. Varied expression of major histocompatibility complex and oncogenes in Shope carcinoma cell lines derived from a single tumor. *J Cancer Res Clin Oncol*. 1995;121:16-22. (FC, ICC, ELISA)
8. Metzler B, Mayr M, Dietrich H, Singh M, Wiebe E, Xu Q, et al. Inhibition of arteriosclerosis by T-cell depletion in normocholesterolemic rabbits immunized with heat shock protein 65. *Arterioscler Thromb Vasc Biol*. 1999;19:1905-11. (FC)
9. Hayes SM, Knight KL. Group 1 CD1 genes in rabbit. *J Immunol*. 2001;166:403-10. (FC)
10. Jasper PJ, Zhai S, Kalis SL, Kingzette M, Knight KL. B lymphocyte development in rabbit: progenitor B cells and waning of B lymphopoiesis. *J Immunol*. 2003;171:6372-80. (FC)
11. Leader BT, VanVoorhis WC, Lukehart SA. Expression of rabbit interleukin-4 and characterization of its biologic activity on T and B-cells. *Vet Immunol Immunopathol*. 2006;113:421-7. (FC)
12. Hansson GK, Seifert PS, Olsson G, Bondjers G. Immunohistochemical detection of macrophages and T lymphocytes in atherosclerotic lesions of cholesterol-fed rabbits. *Arterioscler Thromb*. 1991;11:745-50. (IHC-FS)
13. Okabayashi M, Angell MG, Christensen ND, Kreider JW. Morphometric analysis and identification of infiltrating leucocytes in regressing and progressing Shope rabbit papillomas. *Int J Cancer*. 1991;49:919-23. (IHC-FS)
14. Mircheff AK, Gierow JP, Lee LM, Lambert RW, Akashi RH, Hofman FM. Class II antigen expression by lacrimal epithelial cells. An updated working hypothesis for antigen presentation by epithelial cells. *Invest Ophthalmol Vis Sci*. 1991;32:2302-10. (IHC-FS, ICC)
15. Tanaka H, Sukhova GK, Swanson SJ, Clinton SK, Ganz P, Cybulsky MI, et al. Sustained activation of vascular cells and leukocytes in the rabbit aorta after balloon injury. *Circulation*. 1993;88:1788-803. (IHC-FS)
16. Li H, Cybulsky MI, Gimbrone MA, Libby P. Inducible expression of vascular cell adhesion molecule-1 by vascular smooth muscle cells in vitro and within rabbit atheroma. *Am J Pathol*. 1993;143:1551-9. (IHC-FS)
17. Okabayashi M, Pickel MD, Budgeon LR, Cladel NM, Kreider JW. Podofilox-induced regression of Shope papillomas may be independent of host immunity. *J Invest Dermatol*. 1993;101:852-7. (IHC-FS)
18. Wilkinson JM, McDonald G, Smith S, Galea-Lauri J, Lewthwaite J, Henderson B, et al. Immunohistochemical identification of leucocyte populations in normal tissue and inflamed synovium of the rabbit. *J Pathol*. 1993;170:315-20. (IHC-FS)
19. Tanaka H, Sunamori M, Suzuki A, Sukhova GK, Libby P. Endothelial activation potentiates neointimal lesion formation in the rabbit aorta after balloon injury. *Ann NY Acad Sci*. 1997;811:448-58. (IHC-FS)
20. Gu W, Janssens P, Holland M, Seamark R, Kerr P. Lymphocytes and MHC class II positive cells in the female rabbit reproductive tract before and after ovulation. *Immunol Cell Biol*. 2005;83:596-606. (IHC-FS)
21. Huang W, Chamberlain CG, Sarafian RY, Chan-Ling T. MHC class II expression by β₂ integrin (CD18)-positive microglia, macrophages and macrophage-like cells in rabbit retina. *Neuron Glia Biol*. 2008;4:285-94. (IHC-FS, IHC-WM)
22. Lou H, Kodama T, Zhao YJ, Maurice P, Wang YN, Katz N, et al. Inhibition of transplant coronary arteriosclerosis in rabbits by chronic estradiol treatment is associated with abolition of MHC class II antigen expression. *Circulation*. 1996;94:3355-61. (IHC-PS)
23. Mircheff AK, Gierow JP, Wood RL. Traffic of major histocompatibility complex class II molecules in rabbit lacrimal gland acinar cells. *Invest Ophthalmol Vis Sci*. 1994;35:3943-51. (ICC)
24. Yang T, Zeng H, Zhang J, Okamoto CT, Warren DW, Wood RL, et al. MHC class II molecules, cathepsins, and La/SSB proteins in lacrimal acinar cell endomembranes. *Am J Physiol*. 1999;277:C994-1007. (WB)
25. Knight KL, Johnson A, Coligan JE, Kindt TJ. Partial amino acid sequence analysis of rabbit MHC class II molecules isolated from two-dimensional polyacrylamide gels. *Mol Immunol*. 1987;24:449-54. (IP)
26. Kotani M, Yamamura Y, Tamatani T, Kitamura F, Miyasaka M. Generation and characterization of monoclonal antibodies against rabbit CD4, CD5 and CD11a antigens. *J Immunol Methods*. 1993;157:241-52. (IP, Block)