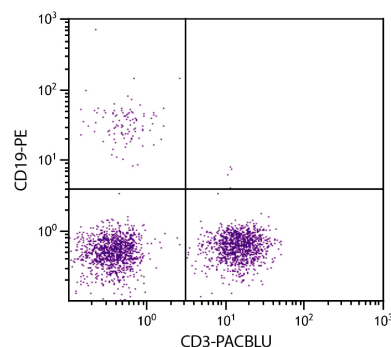




Mouse Anti-Human CD3

Cat. No.	Format	Size
9515-01	Purified (UNLB)	0.1 mg
9515-02	Fluorescein (FITC)	100 tests
9515-02S	Fluorescein (FITC)	25 tests
9515-08	Biotin (BIOT)	100 tests
9515-09	R-phycoerythrin (PE)	100 tests
9515-09S	R-phycoerythrin (PE)	25 tests
9515-11	Allophycocyanin (APC)	100 tests
9515-11S	Allophycocyanin (APC)	25 tests
9515-13	Spectral Red® (SPRD)	100 tests
9515-14	Low Endotoxin, Azide-Free (LE/AF)	0.5 mg
9515-15	Cyanine 5 (CY5)	100 tests
9515-16	R-phycoerythrin-Cyanine 5.5 (PE/CY5.5)	100 tests
9515-17	R-phycoerythrin-Cyanine 7 (PE/CY7)	100 tests
9515-19	Allophycocyanin-Cyanine 7 (APC/CY7)	100 tests
9515-26	Pacific Blue™ (PACBLU)	100 tests
9515-27	Alexa Fluor® 700 (AF700)	100 tests
9515-30	Alexa Fluor® 488 (AF488)	100 tests
9515-31	Alexa Fluor® 647 (AF647)	100 tests



Human peripheral blood lymphocytes were stained with Mouse Anti-Human CD3-PACBLU (SB Cat. No. 9515-26) and Mouse Anti-Human CD19-PE (SB Cat. No. 9340-09).

Overview

Clone	UCHT1
Isotype	Mouse (BALB/c) IgG ₁ κ
Immunogen	Human peripheral blood lymphocytes from a patient with Sézary's syndrome and infant thymocytes
Specificity	Human CD3; Mr 20 kDa
Alternate Name(s)	CD3ε, T3E, TCRE, Leu-4, T3
Workshop	I T3; III 126, 208, 471; IV T3.2; VI 6T-CD3, 6T-CD3.1

Description

CD3, a member of the immunoglobulin superfamily of cell surface receptors, is comprised of five invariable chains ranging from 16-28 kDa and is closely associated with the T cell antigen receptor (TCR). CD3 is expressed on 70-80% of normal peripheral blood lymphocytes and on 10-20% of thymocytes. It plays a major role in signaling during antigen recognition, leading to T cell activation. The monoclonal antibody UCHT1 reacts with the 20 kDa ε chain of the CD3/TCR complex.

Applications

FC – Quality tested ^{1,6-11}
 IHC-FS – Reported in literature ^{4,5}
 IHC-PS – Reported in literature ⁵
 ICC – Reported in literature ¹
 IP – Reported in literature ²
 WB – Reported in literature ³
 Activ – Reported in literature ^{1,2}
 Block – Reported in literature ²

Working Dilutions

Flow Cytometry	Purified (UNLB) antibody	≤ 1 µg/10 ⁶ cells
	FITC, BIOT, PE, APC, SPRD, CY5, PE/CY5.5, PE/CY7, APC/CY7, PACBLU, AF488, AF647, and AF700 conjugates	10 µL/10 ⁶ cells
	For flow cytometry, the suggested use of these reagents is in a final volume of 100 µL	

Other Applications	Since applications vary, you should determine the optimum working dilution for the product that is appropriate for your specific need.
---------------------------	--

For Research Use Only. Not for Diagnostic or Therapeutic Use.

Handling and Storage

- The purified (UNLB) antibody is supplied as 0.1 mg of purified immunoglobulin in 1.0 mL of borate buffered saline, pH 8.2. *No preservatives or amine-containing buffer salts added.* Store at 2-8°C.
- The fluorescein (FITC) conjugate is supplied as 25 tests in 0.25 mL or 100 tests in 1.0 mL of PBS/NaN₃. Store at 2-8°C.
- The biotin (BIOT) conjugate is supplied as 100 tests in 1.0 mL of PBS/NaN₃. Store at 2-8°C.
- The R-phycoerythrin (PE) and allophycocyanin (APC) conjugates are supplied as 25 tests in 0.25 mL or 100 tests in 1.0 mL of PBS/NaN₃ and a stabilizing agent. Store at 2-8°C. **Do not freeze!**
- The Spectral Red® (SPRD), R-phycoerythrin-Cyanine 7 (PE/CY7), R-phycoerythrin-Cyanine 5.5 (PE/CY5.5), and allophycocyanin-Cyanine 7 (APC/CY7) conjugates are supplied as 100 tests in 1.0 mL of PBS/NaN₃ and a stabilizing agent. Store at 2-8°C. **Do not freeze!**
- The low endotoxin, azide-free (LE/AF) antibody is supplied as 0.5 mg purified immunoglobulin in 1.0 mL of PBS. Contains no preservative; handle under aseptic conditions. Store at 2-8°C or aliquot into smaller volumes and store at -20°C. Avoid multiple freeze / thaw cycles.
- The Cyanine 5 (CY5), Alexa Fluor® 488 (AF488), Alexa Fluor® 647 (AF647), Alexa Fluor® 700 (AF700), and Pacific Blue™ (PACBLU) conjugates are supplied as 100 tests in 1.0 mL of PBS/NaN₃. Store at 2-8°C.
- Protect fluorochrome-conjugated forms from light. Reagents are stable for the period shown on the label if stored as directed.

Warning

Some reagents contain sodium azide. Please refer to product specific SDS.

References

1. Beverley PC, Callard RE. Distinctive functional characteristics of human "T" lymphocytes defined by E rosetting or a monoclonal anti-T cell antibody. *Eur J Immunol.* 1981;11:329-34. (Immunogen, ICC, Activ, FC)
2. Burns GF, Boyd AW, Beverley PC. Two monoclonal anti-human T lymphocyte antibodies have similar biologic effects and recognize the same cell surface antigen. *J Immunol.* 1982;129:1451-7. (IP, Activ, Block)
3. van Dongen JJ, Krissansen GW, Wolvers-Tettero IL, Comans-Bitter WM, Adriaansen HJ, Hooijkaas H, et al. Cytoplasmic expression of the CD3 antigen as a diagnostic marker for immature T-cell malignancies. *Blood.* 1988;71:603-12. (WB)
4. Patey-Mariaud de Serre N, Cellier C, Jabri B, Delabesse E, Verkarre V, Roche B, et al. Distinction between coeliac disease and refractory sprue: a simple immunohistochemical method. *Histopathology.* 2000;37:70-7. (IHC-FS)
5. Pollard K, Lunny D, Holgate CS, Jackson P, Bird CC. Fixation, processing, and immunochemical reagent effects on preservation of T-lymphocyte surface membrane antigens in paraffin-embedded tissue. *J Histochem Cytochem.* 1987;35:1329-38. (IHC-FS, IHC-PS)
6. Nistala K, Moncrieffe H, Newton KR, Varsani H, Hunter P, Wedderburn LR. Interleukin-17-producing T cells are enriched in the joints of children with arthritis, but have a reciprocal relationship to regulatory T cell numbers. *Arthritis Rheum.* 2008;58:875-87. (FC)
7. Hunter PJ, Nistala K, Jina N, Eddaoudi A, Thomson W, Hubank M, et al. Biologic predictors of extension of oligoarticular juvenile idiopathic arthritis as determined from synovial fluid cellular composition and gene expression. *Arthritis Rheum.* 2010;62:896-907. (FC)
8. Farag MM, Weigand K, Encke J, Momburg F. Activation of natural killer cells by hepatitis C virus particles in vitro. *Clin Exp Immunol.* 2011;165:352-62. (FC)
9. Rossi LE, Avila DE, Spallanzani RG, Ziblat A, Fuertes MB, Lapyckyj L, et al. Histone deacetylase inhibitors impair NK cell viability and effector functions through inhibition of activation and receptor expression. *J Leukoc Biol.* 2012;91:321-31. (FC)
10. Domaica CI, Fuertes MB, Uriarte I, Girart MV, Sardaños J, Comas DI, et al. Human natural killer cell maturation defect supports in vivo CD56^{bright} to CD56^{dim} lineage development. *PLoS One.* 2012;7(12):e51677. (FC)
11. Henn AD, Wu S, Qiu X, Ruda M, Stover M, Yang H, et al. High-resolution temporal response patterns to influenza vaccine reveal a distinct human plasma cell gene signature. *Sci Rep.* 2013;3:2327. (FC)

Spectral Red® is a registered trademark of Southern Biotechnology Associates, Inc.

Spectral Red® is a PE/CY5 tandem conjugate.

Cy™ is a trademark of Cytiva or one of its subsidiaries.

Alexa Fluor® 488, 647, 700 and Pacific Blue™ are provided under an agreement between Molecular Probes, Inc. (a wholly owned subsidiary of Invitrogen Corporation), and Southern Biotechnology Associates, Inc., and the manufacture, use, sale or import of this product may be subject to one or more U.S. patents, pending applications, and corresponding non-U.S. equivalents, owned by Molecular Probes, Inc. The purchase of this product conveys to the buyer the non-transferable right to use the purchased amount of the product and components of the product in research conducted by the buyer (whether the buyer is an academic or for-profit entity). The buyer cannot sell or otherwise transfer (a) this product (b) its components or (c) materials made using this product or its components to a third party or otherwise use this product or its components or materials made using this product or its components for Commercial Purposes. Commercial Purposes means any activity by a party for consideration and may include, but is not limited to: (1) use of the product or its components in manufacturing; (2) use of the product or its components to provide a service, information, or data; (3) use of the product or its components for therapeutic, diagnostic or prophylactic purposes; or (4) resale of the product or its components, whether or not such product or its components are resold for use in research. For information on purchasing a license to this product for any other use, contact Molecular Probes, Inc., Business Development, 29851 Willow Creek Road, Eugene, OR 97402, USA, Tel: (541) 465-8300. Fax: (541) 335-0504.