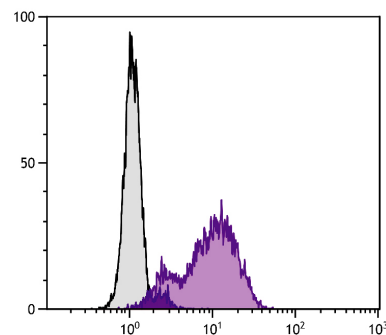




Mouse Anti-Human CD10

Cat. No.	Format	Size
9541-01	Purified (UNLB)	0.1 mg
9541-02	Fluorescein (FITC)	100 tests
9541-09	R-phycoerythrin (PE)	100 tests



Human peripheral blood granulocytes were stained with Mouse Anti-Human CD10-FITC (SB Cat. No. 9541-02).

Overview

Clone	CB-CALLA
Isotype	Mouse IgG _{2b} K
Immunogen	Human CALLA cells
Specificity	Human CD10; Mr 100 kDa
Alternate Name(s)	CALLA, common acute lymphoblastic leukemia antigen, enkephalinase, NEP, KII-NA, MME, gp100
Workshop	N/A

Description

CD10, also known as the common acute lymphoblastic leukemia antigen (CALLA), is a type II transmembrane glycoprotein. It is expressed on granulocytes, a subset of B progenitor cells, germinal center cells, and fibroblasts. CD10 is a zinc-binding metalloprotease which is thought to down-regulate cellular responses to peptide hormones.

Applications

FC – Quality tested ¹

Working Dilutions

Flow Cytometry	Purified (UNLB) antibody	≤ 1 µg/10 ⁶ cells
	FITC and PE conjugates	10 µL/10 ⁶ cells
For flow cytometry, the suggested use of these reagents is in a final volume of 100 µL		

Other Applications Since applications vary, you should determine the optimum working dilution for the product that is appropriate for your specific need.

For Research Use Only. Not for Diagnostic or Therapeutic Use.

Corporate Offices: 160 Oxmoor Blvd • Birmingham, AL 35209 • USA Mailing Address: P.O. Box 26221 • Birmingham, AL 35260 • USA

Tel: 205.945.1774 • U.S. and Canada: 800.722.2255 • Fax: 205.945.8768

Email: info@southernbiotech.com • Website: www.southernbiotech.com

Handling and Storage

- The purified (UNLB) antibody is supplied as 0.1 mg of purified immunoglobulin in 1.0 mL of borate buffered saline, pH 8.2. *No preservatives or amine-containing buffer salts added.* Store at 2-8°C.
- The fluorescein (FITC) conjugate is supplied as 100 tests in 1.0 mL of PBS/NaN₃. Store at 2-8°C.
- The R-phycoerythrin (PE) conjugate is supplied as 100 tests in 1.0 mL of PBS/NaN₃ and a stabilizing agent. Store at 2-8°C. **Do not freeze!**
- Protect fluorochrome-conjugated forms from light. Reagents are stable for the period shown on the label if stored as directed.

Warning

Some reagents contain sodium azide. Please refer to product specific SDS.

References

1. Barreyro L, Will B, Bartholdy B, Zhou L, Todorova TI, Stanley RF, et al. Overexpression of IL-1 receptor accessory protein in stem and progenitor cells and outcome correlation in AML and MDS. *Blood*. 2012;120:1290-8. (FC)