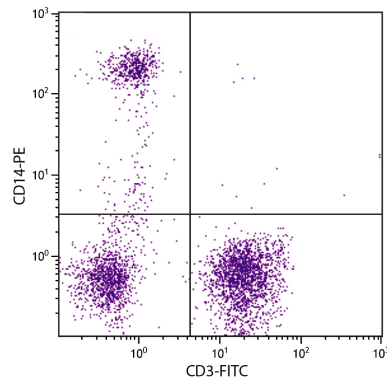




Mouse Anti-Human CD14

| Cat. No. | Format | Size |
|----------|----------------------|-----------|
| 9560-01 | Purified (UNLB) | 0.1 mg |
| 9560-02 | Fluorescein (FITC) | 100 tests |
| 9560-08 | Biotin (BIOT) | 100 tests |
| 9560-09 | R-phycoerythrin (PE) | 100 tests |
| 9560-13 | Spectral Red® (SPRD) | 100 tests |



Human peripheral blood monocytes and lymphocytes were stained with Mouse Anti-Human CD14-PE (SB Cat. No. 9560-09) and Mouse Anti-Human CD3-FITC (SB Cat. No. 9515-02).

Overview

| | |
|--------------------------|--|
| Clone | UCHM-1 |
| Isotype | Mouse (BALB/c) IgG _{2a} K |
| Immunogen | Thymocytes and peripheral blood lymphocytes from a remission AML patient |
| Specificity | Human/Cynomolgus CD14; Mr 55 kDa |
| Alternate Name(s) | LPS-R, LPS receptor, gp55 |
| Workshop | III 203, 239; IV M24 |

Description

CD14 is a 55 kDa glycosphosphatidylinositol (GPI)-anchored single chain glycoprotein. It is expressed on monocytes, macrophages, dendritic cells, and Langerhans cells. It is also weakly expressed on neutrophils. CD14 appears to be involved in clearance of gram-negative bacteria via its high affinity binding to LPS-LPB complexes.

Applications

FC – Quality tested ⁶⁻¹¹
 IHC-FS – Reported in literature ^{1,2}
 ICC – Reported in literature ¹
 IP – Reported in literature ¹
 ELISA – Reported in literature ³
 Block – Reported in literature ⁴
 Depletion – Reported in literature ⁵

Working Dilutions

| | | |
|---------------------------|--|------------------------------|
| Flow Cytometry | Purified (UNLB) antibody | ≤ 1 µg/10 ⁶ cells |
| | FITC, BIOT, PE, and SPRD conjugates | 10 µL/10 ⁶ cells |
| | For flow cytometry, the suggested use of these reagents is in a final volume of 100 µL | |
| Other Applications | Since applications vary, you should determine the optimum working dilution for the product that is appropriate for your specific need. | |

For Research Use Only. Not for Diagnostic or Therapeutic Use.

Handling and Storage

- The purified (UNLB) antibody is supplied as 0.1 mg of purified immunoglobulin in 1.0 mL of borate buffered saline, pH 8.2. *No preservatives or amine-containing buffer salts added.* Store at 2-8°C.
- The fluorescein (FITC) conjugate is supplied as 100 tests in 1.0 mL of PBS/NaN₃. Store at 2-8°C.
- The biotin (BIOT) conjugate is supplied as 100 tests in 1.0 mL of PBS/NaN₃. Store at 2-8°C.
- The R-phycoerythrin (PE) conjugate is supplied as 100 tests in 1.0 mL of PBS/NaN₃ and a stabilizing agent. Store at 2-8°C. **Do not freeze!**
- The Spectral Red® (SPRD) conjugate is supplied as 100 tests in 1.0 mL of PBS/NaN₃ and a stabilizing agent. Store at 2-8°C. **Do not freeze!**
- Protect fluorochrome-conjugated forms from light. Reagents are stable for the period shown on the label if stored as directed.

Warning

Some reagents contain sodium azide. Please refer to product specific SDS.

References

1. Hogg N, MacDonald S, Slusarenko M, Beverley PC. Monoclonal antibodies specific for human monocytes, granulocytes and endothelium. *Immunology*. 1984;53:753-67. (Immunogen, IHC-FS, ICC, IP)
2. Mahida YR, Patel S, Jewell DP. Mononuclear phagocyte system of human Peyer's patches: an immunohistochemical study using monoclonal antibodies. *Clin Exp Immunol*. 1989;75:82-6. (IHC-FS)
3. Mendis D, Ginon I, Louis H, McGregor JL, Poston RN. Cell biotinylation provides a sensitive and effective detection technique for cellular adhesion assays: comparison with existing methods. *J Immunol Methods*. 2001;253:57-68. (ELISA)
4. Chu AJ, Moore J, Sime R, Yu WH, Li Z. Antagonism by ethanol of endotoxin-induced tissue factor activation in relation to the depressed endotoxin binding to monocyte-like U937 cells. *Cell Biochem Funct*. 1997;15:271-81. (Block)
5. Lloyd-Jones KL, Kelly MM, Kubes P. Varying importance of soluble and membrane CD14 in endothelial detection of lipopolysaccharide. *J Immunol*. 2008;181:1446-53. (Depletion)
6. Lester EA, Babensee JE. Proinflammatory phenotype of endothelial cells after coculture with biomaterial-treated blood cells. *J Biomed Mater Res A*. 2003;64:397-410. (FC)
7. Yoshida M, Babensee JE. Poly(lactic-co-glycolic acid) enhances maturation of human monocyte-derived dendritic cells. *J Biomed Mater Res A*. 2004;71:45-54. (FC)
8. Babensee JE, Paranjpe A. Differential levels of dendritic cell maturation on different biomaterials used in combination products. *J Biomed Mater Res A*. 2005;74:503-10. (FC)
9. Shankar SP, Babensee JE. Comparative characterization of cultures of primary human macrophages or dendritic cells relevant to biomaterial studies. *J Biomed Mater Res A*. 2010;92:791-800. (FC)
10. Shankar SP, Petrie TA, García AJ, Babensee JE. Dendritic cell responses to self-assembled monolayers of defined chemistries. *J Biomed Mater Res A*. 2010;92:1487-99. (FC)
11. Yoshino N, Ami Y, Terao K, Tashiro F, Honda M. Upgrading of flow cytometric analysis for absolute counts, cytokines and other antigenic molecules of cynomolgus monkeys (*Macaca fascicularis*) by using anti-human cross-reactive antibodies. *Exp Anim*. 2000;49:97-110. (FC, Cynomolgus Reactivity)

Spectral Red® is a registered trademark of Southern Biotechnology Associates, Inc.

Spectral Red® is a PE/CY5 tandem conjugate.

Cy® is a registered trademark of GE Healthcare.