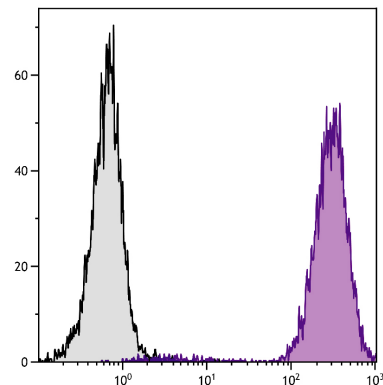




Mouse Anti-Human CD15

Cat. No.	Format	Size
9565-01	Purified (UNLB)	0.1 mg
9565-02	Fluorescein (FITC)	100 tests
9565-08	Biotin (BIOT)	100 tests
9565-09	R-phycoerythrin (PE)	100 tests
9565-27	Alexa Fluor [®] 700 (AF700)	100 tests



Human peripheral blood granulocytes were stained with Mouse Anti-Human CD15-PE (SB Cat. No. 9565-09).

Overview

Clone	28
Isotype	Mouse (BALB/c) IgM κ
Immunogen	Monocytes separated from other peripheral leukocytes on fibronectin plates
Specificity	Human CD15; Mr 83 & 155 kDa - Granulocytes/Mr 83 kDa - Monocytes
Alternate Name(s)	Lewis X, 3-FAL, SSEA-1, 3-fucosyl-N-acetyllactosamine
Workshop	III 665

Description

CD15 is a carbohydrate antigen found on the cell surface of neutrophils and monocytes, but not on basophils, platelets, lymphocytes, or erythrocytes. CD15 may function in adhesion as its ligand is L-selectin (CD62L).

Applications

FC – Quality tested ¹⁻³
 IHC-FS – Reported in literature ^{1,3}
 ICC – Reported in literature ¹
 IP – Reported in literature ¹

Working Dilutions

Flow Cytometry	Purified (UNLB) antibody	$\leq 1 \mu\text{g}/10^6$ cells
	FITC, BIOT, PE, and AF700 conjugates	$10 \mu\text{L}/10^6$ cells
For flow cytometry, the suggested use of these reagents is in a final volume of 100 μL .		

Other Applications Since applications vary, you should determine the optimum working dilution for the product that is appropriate for your specific need.

For Research Use Only. Not for Diagnostic or Therapeutic Use.

Corporate Offices: 160 Oxmoor Blvd • Birmingham, AL 35209 • USA **Mailing Address:** P.O. Box 26221 • Birmingham, AL 35260 • USA

Tel: 205.945.1774 • U.S. and Canada: 800.722.2255 • Fax: 205.945.8768

Email: info@southernbiotech.com • Website: www.southernbiotech.com

Handling and Storage

- The purified (UNLB) antibody is supplied as 0.1 mg of purified immunoglobulin in 1.0 mL of borate buffered saline, pH 8.2. *No preservatives or amine-containing buffer salts added.* Store at 2-8°C.
- The fluorescein (FITC) conjugate is supplied as 100 tests in 1.0 mL of PBS/NaN₃. Store at 2-8°C.
- The biotin (BIOT) conjugate is supplied as 100 tests in 1.0 mL of PBS/NaN₃. Store at 2-8°C.
- The R-phycoerythrin (PE) conjugate is supplied as 100 tests in 1.0 mL of PBS/NaN₃ and a stabilizing agent. Store at 2-8°C. **Do not freeze!**
- The Alexa Fluor[®] 700 (AF700) conjugate is supplied as 100 tests in 1.0 mL of PBS/NaN₃. Store at 2-8°C.
- Protect fluorochrome-conjugated forms from light. Reagents are stable for the period shown on the label if stored as directed.

Warning

Some reagents contain sodium azide. Please refer to product specific (M)SDS.

References

1. Hogg N, MacDonald S, Slusarenko M, Beverley PC. Monoclonal antibodies specific for human monocytes, granulocytes and endothelium. *Immunology*. 1984;53:753-67. (Immunogen, IHC-FS, ICC, IP, FC)
2. Chen K, Xu W, Wilson M, He B, Miller NW, Bengtén E, et al. Immunoglobulin D enhances immune surveillance by activating antimicrobial, proinflammatory and B cell-stimulating programs in basophils. *Nat Immunol*. 2009;10:889-98. (FC)
3. Puga I, Cols M, Barra CM, He B, Cassis L, Gentile M, et al. B cell-helper neutrophils stimulate the diversification and production of immunoglobulin in the marginal zone of the spleen. *Nat Immunol*. 2012;13:170-80. (IHC-FS, FC)

Alexa Fluor[®] 488, 647, 700 and Pacific Blue[™] are provided under an agreement between Molecular Probes, Inc. (a wholly owned subsidiary of Invitrogen Corporation), and Southern Biotechnology Associates, Inc., and the manufacture, use, sale or import of this product may be subject to one or more U.S. patents, pending applications, and corresponding non-U.S. equivalents, owned by Molecular Probes, Inc. The purchase of this product conveys to the buyer the non-transferable right to use the purchased amount of the product and components of the product in research conducted by the buyer (whether the buyer is an academic or for-profit entity). The buyer cannot sell or otherwise transfer (a) this product (b) its components or (c) materials made using this product or its components to a third party or otherwise use this product or its components or materials made using this product or its components for Commercial Purposes. Commercial Purposes means any activity by a party for consideration and may include, but is not limited to: (1) use of the product or its components in manufacturing; (2) use of the product or its components to provide a service, information, or data; (3) use of the product or its components for therapeutic, diagnostic or prophylactic purposes; or (4) resale of the product or its components, whether or not such product or its components are resold for use in research. For information on purchasing a license to this product for any other use, contact Molecular Probes, Inc., Business Development, 29851 Willow Creek Road, Eugene, OR 97402, USA, Tel: (541) 465-8300. Fax: (541) 335-0504.