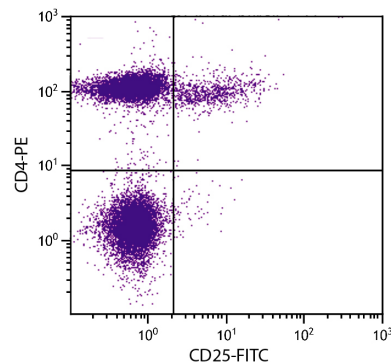




## Mouse Anti-Human CD25

Cat. No.	Format	Size
9582-01	Purified (UNLB)	0.1 mg
9582-09	R-phycoerythrin (PE)	100 tests
9582-26	Pacific Blue™ (PACBLU)	100 tests
9582-27	Alexa Fluor® 700 (AF700)	100 tests
9582-30	Alexa Fluor® 488 (AF488)	100 tests
9582-31	Alexa Fluor® 647 (AF647)	100 tests



PHA-stimulated human peripheral blood lymphocytes were stained with Mouse Anti-Human CD25-FITC (SB Cat. No. 9582-02; in development) and Mouse Anti-Human CD4-PE (SB Cat. No. 9522-09).

### Overview

<b>Clone</b>	BC96
<b>Isotype</b>	Mouse IgG <sub>1</sub> κ
<b>Immunogen</b>	Unknown
<b>Specificity</b>	Human/Rhesus/Cynomolgus CD25; Mr 55 kDa
<b>Alternate Name(s)</b>	IL-2R $\alpha$ , Tac antigen
<b>Workshop</b>	V C012

### Description

The BC96 monoclonal antibody reacts with human CD25, the 55 kDa interleukin-2 receptor  $\alpha$  chain (IL-2R $\alpha$ ). CD25 is expressed by early progenitors of T and B lineage as well as by activated mature T and B lymphocytes. By itself, CD25 binds IL-2 only with low affinity. However, CD25 associates with CD122 (IL-2 receptor  $\beta$  chain) and CD132 (common  $\gamma$  chain) to form the high affinity IL-2 receptor. CD25 plays a role in lymphocyte differentiating and activation/proliferation. CD25 is expressed on activated B cells, monocytes/macrophages, and T cells.

### Applications

FC – Quality tested <sup>2,3</sup>  
IHC-FS – Reported in literature <sup>1</sup>

### Working Dilutions

<b>Flow Cytometry</b>	Purified (UNLB) antibody	$\leq 1 \mu\text{g}/10^6$ cells
	PE, AF488, AF647, AF700, and PACBLU conjugates	$10 \mu\text{L}/10^6$ cells
For flow cytometry, the suggested use of these reagents is in a final volume of 100 $\mu\text{L}$ .		

**Other Applications** Since applications vary, you should determine the optimum working dilution for the product that is appropriate for your specific need.

**For Research Use Only. Not for Diagnostic or Therapeutic Use.**

Corporate Offices: 160 Oxmoor Blvd • Birmingham, AL 35209 • USA Mailing Address: P.O. Box 26221 • Birmingham, AL 35260 • USA

Tel: 205.945.1774 • U.S. and Canada: 800.722.2255 • Fax: 205.945.8768

Email: [info@southernbiotech.com](mailto:info@southernbiotech.com) • Website: [www.southernbiotech.com](http://www.southernbiotech.com)

## Handling and Storage

---

- The purified (UNLB) antibody is supplied as 0.1 mg of purified immunoglobulin in 1.0 mL of borate buffered saline, pH 8.2. *No preservatives or amine-containing buffer salts added.* Store at 2-8°C.
- The R-phycoerythrin (PE) conjugate is supplied as 100 tests in 1.0 mL of PBS/NaN<sub>3</sub> and a stabilizing agent. Store at 2-8°C. **Do not freeze!**
- The Alexa Fluor<sup>®</sup> 488 (AF488), Alexa Fluor<sup>®</sup> 647 (AF647), Alexa Fluor<sup>®</sup> 700 (AF700), and Pacific Blue<sup>™</sup> (PACBLU) conjugates are supplied as 100 tests in 1.0 mL of PBS/NaN<sub>3</sub>. Store at 2-8°C.
- Protect fluorochrome-conjugated forms from light. Reagents are stable for the period shown on the label if stored as directed.

## Warning

---

Some reagents contain sodium azide. Please refer to product specific (M)SDS.

## References

---

1. Ernst CW, Lee JE, Nakanishi T, Karimbux NY, Rezende TM, Stashenko P, et al. Diminished forkhead box P3/CD25 double-positive T regulatory cells are associated with the increased nuclear factor- $\kappa$ B ligand (RANKL<sup>+</sup>) T cells in bone resorption lesion of periodontal disease. *Clin Exp Immunol.* 2007;148:271-80. (IHC-FS)
2. Cornwell WD, Lewis MG, Fan X, Rappaport J, Rogers TJ. Effect of chronic morphine administration on circulating T cell population dynamics in rhesus macaques. *J Neuroimmunol.* 2013;265:43-50. (FC, Rhesus Reactivity)
3. Willer DO, Ambagala AP, Pilon R, Chan JK, Fournier J, Brooks J, et al. Experimental infection of Cynomolgus Macaques (*Macaca fascicularis*) with human varicella-zoster virus. *J Virol.* 2012;86:3626-34. (FC, Cynomolgus Reactivity)

Alexa Fluor<sup>®</sup> 488, 647, 700 and Pacific Blue<sup>™</sup> are provided under an agreement between Molecular Probes, Inc. (a wholly owned subsidiary of Invitrogen Corporation), and Southern Biotechnology Associates, Inc., and the manufacture, use, sale or import of this product may be subject to one or more U.S. patents, pending applications, and corresponding non-U.S. equivalents, owned by Molecular Probes, Inc. The purchase of this product conveys to the buyer the non-transferable right to use the purchased amount of the product and components of the product in research conducted by the buyer (whether the buyer is an academic or for-profit entity). The buyer cannot sell or otherwise transfer (a) this product (b) its components or (c) materials made using this product or its components to a third party or otherwise use this product or its components or materials made using this product or its components for Commercial Purposes. Commercial Purposes means any activity by a party for consideration and may include, but is not limited to: (1) use of the product or its components in manufacturing; (2) use of the product or its components to provide a service, information, or data; (3) use of the product or its components for therapeutic, diagnostic or prophylactic purposes; or (4) resale of the product or its components, whether or not such product or its components are resold for use in research. For information on purchasing a license to this product for any other use, contact Molecular Probes, Inc., Business Development, 29851 Willow Creek Road, Eugene, OR 97402, USA, Tel: (541) 465-8300. Fax: (541) 335-0504.

TB9582  
12-Jan-16