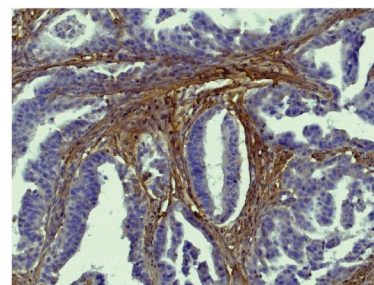




## Goat Anti-Type I Collagen

Cat. No.	Format	Size
1310-01	Purified (UNLB)	0.2 mg
1310-02	Fluorescein (FITC)	0.2 mg
1310-08	Biotin (BIOT)	0.2 mg
1310-30	Alexa Fluor® 488 (AF488)	0.2 mg
1310-31	Alexa Fluor® 647 (AF647)	0.2 mg



Paraffin embedded human gastric cancer tissue was stained with Goat Anti-Type I Collagen-BIOT (SB Cat. No. 1310-08) followed by Streptavidin-HRP (SB Cat. No. 7100-05), DAB, and hematoxylin.

## Description

<b>Specificity</b>	Reacts with conformational determinants on type I collagen Referenced species reactivities include –
	Human <sup>1-5,10,20,26,27,29,31-34</sup> Chicken <sup>17</sup> Hamster <sup>11,18</sup>
	Mouse <sup>24,27,28</sup> Chinchilla <sup>19</sup> Porcine <sup>5,21</sup>
	Rat <sup>5,13-15,23,25,27,35</sup> Elephant <sup>8</sup> Rabbit <sup>16,30</sup>
	Bovine <sup>6,20</sup> Feline <sup>9</sup> Sheep <sup>7</sup>
	Canine <sup>5,12</sup> Guinea Pig <sup>16</sup> Tree Shrew <sup>22</sup>
<b>Source</b>	Pooled antisera from goats hyperimmunized with type I collagen
<b>Cross Adsorption</b>	Collagen types II, III, IV, V, and VI
<b>Purification</b>	Affinity chromatography on type I collagen covalently linked to agarose

## Applications

Quality tested applications include –

ELISA <sup>1-3</sup>  
FLISA

Other referenced applications include –

IHC-PS <sup>4-15</sup>  
IHC-FS <sup>16-24</sup>  
ICC <sup>14,24-28</sup>  
EM <sup>29-31</sup>  
FC <sup>32</sup>  
WB <sup>3,10,13-15,26-28,33</sup>  
IP <sup>34,35</sup>

## Working Dilutions

<b>ELISA</b>	BIOT conjugate	1:1,000 – 1:4,000
<b>FLISA</b>	FITC and AF488 conjugates	1:200 – 1:400
	AF647 conjugate	≤ 1 µg/mL
<b>Other Applications</b>	Since applications vary, you should determine the optimum working dilution for the product that is appropriate for your specific need.	

**For Research Use Only. Not for Diagnostic or Therapeutic Use.**

**Corporate Offices:** 160 Oxmoor Blvd • Birmingham, AL 35209 • USA    **Mailing Address:** P.O. Box 26221 • Birmingham, AL 35260 • USA

**Tel:** 205.945.1774 • U.S. and Canada: 800.722.2255 • **Fax:** 205.945.8768

**Email:** [info@southernbiotech.com](mailto:info@southernbiotech.com) • **Website:** [www.southernbiotech.com](http://www.southernbiotech.com)

## Handling and Storage

- The purified (UNLB) antibody is supplied as 0.2 mg of purified immunoglobulin in 0.5 mL of borate buffered saline, pH 8.2. *No preservatives or amine-containing buffer salts added.* Store at 2-8°C.
- The fluorescein (FITC), biotin (BIOT), Alexa Fluor® 488 (AF488), and Alexa Fluor® 647 (AF647) conjugates are supplied as 0.2 mg in 0.5 mL of PBS/NaN<sub>3</sub>. Store at 2-8°C.
- Protect fluorochrome-conjugated forms from light. Reagents are stable for the period shown on the label if stored as directed.

## Warning

Some reagents contain sodium azide. Please refer to product specific SDS.

## References

1. Rasmussen LM, Hansen PR, Ledet T. Homocysteine and the production of collagens, proliferation and apoptosis in human arterial smooth muscle cells. *APMIS*. 2004;112:598-604. (ELISA, Human Reactivity)
2. Kottler UB, Jünemann AG, Aigner T, Zenkel M, Rummelt C, Schlötzer-Schrehardt U. Comparative effects of TGF-β1 and TGF-β2 on extracellular matrix production, proliferation, migration, and collagen contraction of human Tenon's capsule fibroblasts in pseudoexfoliation and primary open-angle glaucoma. *Exp Eye Res*. 2005;80:121-34. (ELISA, Human Reactivity)
3. Dooley A, Shi-Wen X, Aden N, Tranah T, Desai N, Denton CP, et al. Modulation of collagen type I, fibronectin and dermal fibroblast function and activity, in systemic sclerosis by the antioxidant epigallocatechin-3-gallate. *Rheumatology*. 2010;49:2024-36. (ELISA, WB, Human Reactivity)
4. Zhang WW, Ma KC, Andersen O, Sourander P, Tolleson PO, Olsson Y. The microvascular changes in cases of hereditary multi-infarct disease of the brain. *Acta Neuropathol*. 1994;87:317-24. (IHC-PS, Human Reactivity)
5. Van Deijnen JH, Van Suylichem PT, Wolters GH, Van Schilfgaarde R. Distribution of collagens type I, type III and type V in the pancreas of rat, dog, pig and man. *Cell Tissue Res*. 1994;277:115-21. (IHC-PS, Canine, Human, Porcine, & Rat Reactivity)
6. Moses MA, Wiederschain D, Wu I, Fernandez CA, Ghazizadeh V, Lane WS, et al. Troponin I is present in human cartilage and inhibits angiogenesis. *Proc Natl Acad Sci USA*. 1999;96:2645-50. (IHC-PS, Bovine Reactivity)
7. Dorotka R, Bindreiter U, Macfelda K, Windberger U, Nehrer S. Marrow stimulation and chondrocyte transplantation using a collagen matrix for cartilage repair. *Osteoarthritis Cartilage*. 2005;13:655-64. (IHC-PS, Sheep Reactivity)
8. Weissengruber GE, Egerbacher M, Forstenpointner G. Structure and innervation of the tusk pulp in the African elephant (*Loxodonta africana*). *J Anat*. 2005;206:387-93. (IHC-PS, Elephant Reactivity)
9. Walter I, Schönkypyl S. Extracellular matrix components and matrix degrading enzymes in the feline placenta during gestation. *Placenta*. 2006;27:291-306. (IHC-PS, Feline Reactivity)
10. Alcazar O, Cousins SW, Striker GE, Marin-Castano ME. (Pro)renin receptor is expressed in human retinal pigment epithelium and participates in extracellular matrix remodeling. *Exp Eye Res*. 2009;89:638-47. (IHC-PS, WB, Human Reactivity)
11. Chen W, Yu M, Li Y, Chen W, Xia Y. Beneficial effects of astragalus polysaccharides treatment on cardiac chymase activities and cardiomyopathy in diabetic hamsters. *Acta Diabetol*. 2010;47 Suppl 1:S35-46. (IHC-PS, Hamster Reactivity)
12. Kyller M, Witter K, Tichy F. Gingival stippling in dogs: clinical and structural characteristics. *Res Vet Sci*. 2010;88:195-202. (IHC-PS, Canine Reactivity)
13. Zhang Y, Edgley AJ, Cox AJ, Powell AK, Wang B, Kompa AR, et al. FT011, a new anti-fibrotic drug, attenuates fibrosis and chronic heart failure in experimental diabetic cardiomyopathy. *Eur J Heart Fail*. 2012;14:549-62. (IHC-PS, WB, Rat Reactivity)
14. Jiang L, Zhou Y, Xiong M, Fang L, Wen P, Cao H, et al. Sp1 mediates microRNA-29c-regulated type I collagen production in renal tubular epithelial cells. *Exp Cell Res*. 2013;319:2254-65. (IHC-PS, ICC, WB, Rat Reactivity)
15. Sun S, Zhao T, Zhang H, Huang X, Zhang W, Zhang L, et al. Renoprotective effect of berberine on type 2 diabetic nephropathy in rats. *Clin Exp Pharmacol Physiol*. 2015;42:662-70. (IHC-PS, WB, Rat Reactivity)
16. Jerdan JA, Michels RG, Glaser BM. Extracellular matrix of newly forming vessels—an immunohistochemical study. *Microvasc Res*. 1991;42:255-65. (IHC-FS, Guinea Pig & Rabbit Reactivity)
17. Miyaishi O, Sakata K, Matsuyama M, Saga S. Distribution of the collagen binding heat-shock protein in chicken tissues. *J Histochem Cytochem*. 1992;40:1021-9. (IHC-FS, Chicken Reactivity)
18. Dixon IM, Ju H, Reid NL, Scammell-La Fleur T, Werner JP, Jasmin G. Cardiac collagen remodeling in the cardiomyopathic Syrian hamster and the effect of losartan. *J Mol Cell Cardiol*. 1997;29:1837-50. (IHC-FS, Hamster Reactivity)
19. Harada T, Juhn SK, Kim Y, Sakakura Y. Immunohistochemical localization of collagen types I, III, and IV, laminin, fibronectin, and keratin in the endolymphatic sac. *Ann Otol Rhinol Laryngol*. 2000;109:180-6. (IHC-FS, Chinchilla Reactivity)
20. Fraser SA, Crawford A, Frazer A, Dickinson S, Hollander AP, Brook IM, et al. Localization of type VI collagen in tissue-engineered cartilage on polymer scaffolds. *Tissue Eng*. 2006;12:569-77. (IHC-FS, Bovine & Human Reactivity)
21. Chun SY, Lim GJ, Kwon TG, Kwak EK, Kim BW, Atala A, et al. Identification and characterization of bioactive factors in bladder submucosa matrix. *Biomaterials*. 2007;28:4251-6. (IHC-FS, Porcine Reactivity)
22. Albon J, Farrant S, Akhtar S, Young R, Boulton ME, Smith G, et al. Connective tissue structure of the tree shrew optic nerve and associated ageing changes. *Invest Ophthalmol Vis Sci*. 2007;48:2134-44. (IHC-FS, Tree Shrew Reactivity)
23. Behmoaras J, Diaz AG, Venda L, Ko J, Srivastava P, Montoya A, et al. Macrophage epoxygenase determines a profibrotic transcriptome signature. *J Immunol*. 2015;194:4705-16. (IHC-FS, Rat Reactivity)
24. Kothapalli D, Liu S, Bae YH, Monslow J, Xu T, Hawthorne EA, et al. Cardiovascular protection by ApoE and ApoE-HDL linked to suppression of ECM gene expression and arterial stiffening. *Cell Rep*. 2012;2:1259-71. (IHC-FS, ICC, Mouse Reactivity)
25. Lundquist P, Ritchie HH, Moore K, Lundgren T, Linde A. Phosphate and calcium uptake by rat odontoblast-like MRPC-1 cells concomitant with mineralization. *J Bone Miner Res*. 2002;17:1801-13. (ICC, Rat Reactivity)
26. Bhattacharyya S, Ishida W, Wu M, Wilkes M, Mori Y, Hinchcliff M, et al. A non-Smad mechanism of fibroblast activation by transforming growth factor-β via c-Abl and Egr-1: selective modulation by imatinib mesylate. *Oncogene*. 2009;28:1285-97. (ICC, WB, Human Reactivity)
27. Wang J, Chu ES, Chen H, Man K, Go MY, Huang XR, et al. microRNA-29b prevents liver fibrosis by attenuating hepatic stellate cell activation and inducing apoptosis through targeting PI3K/AKT pathway. *Oncotarget*. 2015;6:7325-38. (ICC, WB, Human, Mouse, & Rat Reactivity)
28. Marangoni RG, Korman BD, Wei J, Wood TA, Graham LV, Whitfield ML, et al. Myofibroblasts in murine cutaneous fibrosis originate from adiponectin-positive intradermal progenitors. *Arthritis Rheumatol*. 2015;67:1062-73. (ICC, WB, Mouse Reactivity)
29. Dingemans KP, Teeling P, Legendijk JH, Becker AE. Extracellular matrix of the human aortic media: an ultrastructural histochemical and immunohistochemical study of the adult aortic media. *Anat Rec*. 2000;258:1-14. (EM, Human Reactivity)
30. Sharawy M, Ali AM, Choi W. Experimental induction of anterior disk displacement of the rabbit craniomandibular joint: an immuno-electron microscopic study of collagen and proteoglycan occurrence in the condylar cartilage. *J Oral Pathol Med*. 2003;32:176-84. (EM, Rabbit Reactivity)
31. Rodrigues MT, Lee SJ, Gomes ME, Reis RL, Atala A, Yoo JJ. Amniotic fluid-derived stem cells as a cell source for bone tissue engineering. *Tissue Eng Part A*. 2012;18:2518-27. (EM, Human Reactivity)
32. Xu S, Vancheeswaran R, Bou-Gharios G, O'Hare MJ, Olsen I, Abraham D, et al. Scleroderma-derived human fibroblasts retain abnormal phenotypic and functional characteristics following retroviral transduction with the SV40 tST antigen. *Exp Cell Res*. 1995;220:407-14. (FC, Human Reactivity)
33. Mendoza FA, Píera-Velázquez S, Farber JL, Feghali-Bostwick C, Jiménez SA. Endothelial cells expressing endothelial and mesenchymal cell gene products in lung tissue from patients with systemic sclerosis-associated interstitial lung disease. *Arthritis Rheumatol*. 2016;68:210-7. (WB, Human Reactivity)
34. Sato M, Shogogue D, Hatamochi A, Yamazaki S, Trojanowska M. Lysophosphatidic acid inhibits TGF-β-mediated stimulation of type I collagen mRNA stability via an ERK-dependent pathway in dermal fibroblasts. *Matrix Biol*. 2004;23:353-61. (IP, Human Reactivity)
35. Reynaert H, Rombouts K, Jia Y, Urbain D, Chatterjee N, Uyama N, et al. Somatostatin at nanomolar concentration reduces collagen I and III synthesis by, but not proliferation of activated rat hepatic stellate cells. *Br J Pharmacol*. 2005;146:77-88. (IP, Rat Reactivity)

Alexa Fluor® 488, 647, 700 and Pacific Blue™ are provided under an agreement between Molecular Probes, Inc. (a wholly owned subsidiary of Invitrogen Corporation), and Southern Biotechnology Associates, Inc., and the manufacture, use, sale or import of this product may be subject to one or more U.S. patents, pending applications, and corresponding non-U.S. equivalents, owned by Molecular Probes, Inc. The purchase of this product conveys to the buyer the non-transferable right to use the purchased amount of the product and components of the product in research conducted by the buyer (whether the buyer is an academic or for-profit entity). The buyer cannot sell or otherwise transfer (a) this product (b) its components or (c) materials made using this product or its components to a third party or otherwise use this product or its components or materials made using this product or its components for Commercial Purposes. Commercial Purposes means any activity by a party for consideration and may include, but is not limited to: (1) use of the product or its components in manufacturing; (2) use of the product or its components to provide a service, information, or data; (3) use of the product or its components for therapeutic, diagnostic or prophylactic purposes; or (4) resale of the product or its components, whether or not such product or its components are resold for use in research. For information on purchasing a license to this product for any other use, contact Molecular Probes, Inc., Business Development, 29851 Willow Creek Road, Eugene, OR 97402, USA, Tel: (541) 465-8300. Fax: (541) 335-0504.

TB1310

03-Dec-21

**Corporate Offices:** 160 Oxmoor Blvd • Birmingham, AL 35209 • USA **Mailing Address:** P.O. Box 26221 • Birmingham, AL 35260 • USA

**Tel:** 205.945.1774 • U.S. and Canada: 800.722.2255 • **Fax:** 205.945.8768

**Email:** [info@southernbiotech.com](mailto:info@southernbiotech.com) • **Website:** [www.southernbiotech.com](http://www.southernbiotech.com)