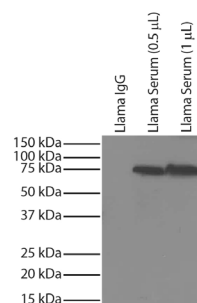




## Mouse Anti-Llama IgM

Cat. No.	Format	Size
5820-01L	Purified (UNLB)	1.0 mg
5820-01M	Purified (UNLB)	0.5 mg
5820-01S	Purified (UNLB)	0.1 mg
5820-04	Alkaline Phosphatase (AP)	1.0 mL
5820-05	Horseradish peroxidase (HRP)	1.0 mL
5820-08	Biotin (BIOT)	0.5 mg



Llama IgG and llama serum was resolved by electrophoresis, transferred to PVDF membrane, and probed with Mouse Anti-Llama IgM-UNLB (SB Cat. No. 5820-01) followed by Goat Anti-Mouse IgG<sub>2b</sub>, Human ads-HRP (SB Cat. No. 1090-05) and chemiluminescent detection.

## Overview

<b>Clone</b>	SB189b
<b>Isotype</b>	Mouse (BALB/c) IgG <sub>2b</sub> K
<b>Immunogen</b>	Llama IgM
<b>Specificity</b>	Llama IgM

## Applications

ELISA – Quality tested  
WB <sup>1</sup>

## Working Dilutions

<b>ELISA</b>	AP conjugate	1:1,000 – 1:2,000
	HRP conjugate	1:8,000 – 1:16,000
	BIOT conjugate	1:5,000 – 1:20,000
<b>Immunoblotting</b>	Purified (UNLB) antibody	≤ 1 µg/mL
<b>Other Applications</b>	Since applications vary, you should determine the optimum working dilution for the product that is appropriate for your specific need.	

## Handling and Storage

- The purified (UNLB) antibody is supplied as 0.1 mg purified immunoglobulin in 0.1 mL, 0.5 mg purified immunoglobulin in 0.5 mL, or 1.0 mg purified immunoglobulin in 1.0 mL of borate buffered saline, pH 8.2. *No preservatives or amine-containing buffer salts added.* Store at 2-8°C.
- The alkaline phosphatase (AP) conjugate is supplied as 1.0 mL in a stock solution of 50 mM Tris/1 mM MgCl<sub>2</sub>/50% glycerol, pH 8.0, containing NaN<sub>3</sub> as preservative. Store at 2-8°C or long-term at -20°C.
- The horseradish peroxidase (HRP) conjugate is supplied as 1.0 mL in a stock solution of 50% glycerol/50% PBS, pH 7.4. No preservative added. Store at 2-8°C or long-term at -20°C.
- The biotin (BIOT) conjugate is supplied as 0.5 mg in 1.0 mL of PBS/NaN<sub>3</sub>. Store at 2-8°C.
- Reagents are stable for the period shown on the label if stored as directed.

## Warning

Some reagents contain sodium azide. Please refer to product specific SDS.

## References

- SouthernBiotech published data (WB)

**For Research Use Only. Not for Diagnostic or Therapeutic Use.**

TB5820  
28-Dec-21