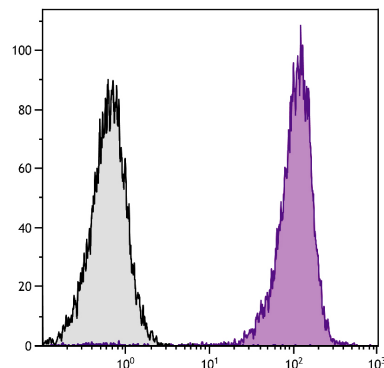


Mouse Anti-Human CD11b

Cat. No.	Format	Size
9546-01	Purified (UNLB)	0.1 mg
9546-02	Fluorescein (FITC)	100 tests
9546-08	Biotin (BIOT)	100 tests
9546-09	R-phycoerythrin (PE)	100 tests
9546-09S	R-phycoerythrin (PE)	25 tests
9546-11	Allophycocyanin (APC)	100 tests
9546-11S	Allophycocyanin (APC)	25 tests
9546-13	Spectral Red® (SPRD)	100 tests
9546-26	Pacific Blue™ (PACBLU)	100 tests
9546-30	Alexa Fluor® 488 (AF488)	100 tests
9546-31	Alexa Fluor® 647 (AF647)	100 tests



Human peripheral blood granulocytes were stained with Mouse Anti-Human CD11b-APC (SB Cat. No. 9546-11).

Overview

Clone	ICRF44
Isotype	Mouse (BALB/c) IgG ₁ κ
Immunogen	Rheumatoid synovial cells and human monocytes
Specificity	Human/Porcine/Rhesus/Cynomolgus/Chimpanzee/Baboon CD11b; Mr 165 kDa
Alternate Name(s)	Mac-1α, Mo-1, CR3, integrin α _M , C3biR, ITGAM, CR3A, p170
Workshop	III 202, 238, 648; IV M47; VI Ref.4

Description

CD11b is the 165 kDa α_M chain which combines with the CD18 β₂ integrin subunit to form the Mac-1 heterodimer. It is expressed on activated lymphocytes, monocytes, granulocytes and a subset of NK cells. CD11b functions in cell-cell and cell-substrate interactions and is a ligand for C3bi, CD50 (ICAM-3), CD54 (ICAM-1) and CD102 (ICAM-2).

Applications

FC – Quality tested ^{7,9}
 IHC-FS – Reported in literature ³
 ICC – Reported in literature ⁴
 IP – Reported in literature ¹
 WB – Reported in literature ²
 Block – Reported in literature ^{5,6}

Working Dilutions

Flow Cytometry	Purified (UNLB) antibody	≤ 1 µg/10 ⁶ cells
	FITC, BIOT, PE, APC, SPRD, PACBLU, AF488 and AF647 conjugates	10 µL/10 ⁶ cells

For flow cytometry, the suggested use of these reagents is in a final volume of 100 µL

Other Applications	Since applications vary, you should determine the optimum working dilution for the product that is appropriate for your specific need.
---------------------------	--

For Research Use Only. Not for Diagnostic or Therapeutic Use.

Handling and Storage

- The purified (UNLB) antibody is supplied as 0.1 mg of purified immunoglobulin in 1.0 mL of borate buffered saline, pH 8.2. *No preservatives or amine-containing buffer salts added.* Store at 2-8°C.
- The fluorescein (FITC), biotin (BIOT), Alexa Fluor® 488 (AF488), Alexa Fluor® 647 (AF647), and Pacific Blue™ (PACBLU) conjugates are supplied as 100 tests in 1.0 mL of PBS/NaN₃. Store at 2-8°C.
- The R-phycoerythrin (PE) and allophycocyanin (APC) conjugates are supplied as 25 tests in 0.25 mL or 100 tests in 1.0 mL of PBS/NaN₃ and a stabilizing agent. Store at 2-8°C. **Do not freeze!**
- The Spectral Red® (SPRD) conjugate is supplied as 100 tests in 1.0 mL of PBS/NaN₃ and a stabilizing agent. Store at 2-8°C. **Do not freeze!**
- Protect fluorochrome-conjugated forms from light. Reagents are stable for the period shown on the label if stored as directed.

Warning

Some reagents contain sodium azide. Please refer to product specific (M)SDS.

References

1. Feng C, Zhang L, Almulki L, Faez S, Whitford M, Hafezi-Moghadam A, et al. Endogenous PMN sialidase activity exposes activation epitope on CD11b/CD18 which enhances its binding interaction with ICAM-1. *J Leukoc Biol.* 2011;90:313-21. (IP)
2. David A, Kacher Y, Specks U, Aviram I. Interaction of proteinase 3 with CD11b/CD18 (β_2 integrin) on the cell membrane of human neutrophils. *J Leukoc Biol.* 2003;74:551-7. (WB)
3. Mayer WJ, Klapproth OK, Hengerer FH, Kook D, Dirisamer M, Priglinger S, et al. In vitro immunohistochemical and morphological observations of penetrating corneal incisions created by a femtosecond laser used for assisted intraocular lens surgery. *J Cataract Refract Surg.* 2014;40:632-8. (IHC-FS)
4. Friedenberger M, Bode M, Krusche A, Schubert W. Fluorescence detection of protein clusters in individual cells and tissue sections by using topomime imaging system: sample preparation and measuring procedures. *Nat Protoc.* 2007;2:2285-94. (ICC)
5. Malhotra V, Hogg N, Sim RB. Ligand binding by the p150,95 antigen of U937 monocytic cells: properties in common with complement receptor type 3 (CR3). *Eur J Immunol.* 1986;16:1117-23. (Block)
6. Nasr AB, Haithcoat J, Masterson JE, Gunn JS, Eaves-Pyles T, Klimpel GR. Critical role for serum opsonins and complement receptors CR3 (CD11b/CD18) and CR4 (CD11c/CD18) in phagocytosis of *Francisella tularensis* by human dendritic cells (DC): uptake of *Francisella* leads to activation of immature DC and intracellular survival of the bacteria. *J Leukoc Biol.* 2006;80:774-86. (Block)
7. Lester EA, Babensee JE. Proinflammatory phenotype of endothelial cells after coculture with biomaterial-treated blood cells. *J Biomed Mater Res A.* 2003;64:397-410. (FC)
8. Hérodin F, Thullier P, Garin M, Drouet M. Nonhuman primates are relevant models for research in hematology, immunology and virology. *Eur Cytokine Netw.* 2005;16:104-16. (Chimpanzee, Baboon, Cynomolgus, Rhesus Reactivity)
9. Singh S, Kloss FR, Brunauer R, Schimke M, Jamnig A, Greiderer-Kleinlercher B, et al. Mesenchymal stem cells show radioresistance in vivo. *J Cell Mol Med.* 2012;16:877-87. (FC, Porcine Reactivity)

Spectral Red® is a registered trademark of Southern Biotechnology Associates, Inc.

Spectral Red® is a PE/CY5 tandem conjugate.

Cy® is a registered trademark of GE Healthcare.

Alexa Fluor® 488, 647, 700 and Pacific Blue™ are provided under an agreement between Molecular Probes, Inc. (a wholly owned subsidiary of Invitrogen Corporation), and Southern Biotechnology Associates, Inc., and the manufacture, use, sale or import of this product may be subject to one or more U.S. patents, pending applications, and corresponding non-U.S. equivalents, owned by Molecular Probes, Inc. The purchase of this product conveys to the buyer the non-transferable right to use the purchased amount of the product and components of the product in research conducted by the buyer (whether the buyer is an academic or for-profit entity). The buyer cannot sell or otherwise transfer (a) this product (b) its components or (c) materials made using this product or its components to a third party or otherwise use this product or its components or materials made using this product or its components for Commercial Purposes. Commercial Purposes means any activity by a party for consideration and may include, but is not limited to: (1) use of the product or its components in manufacturing; (2) use of the product or its components to provide a service, information, or data; (3) use of the product or its components for therapeutic, diagnostic or prophylactic purposes; or (4) resale of the product or its components, whether or not such product or its components are resold for use in research. For information on purchasing a license to this product for any other use, contact Molecular Probes, Inc., Business Development, 29851 Willow Creek Road, Eugene, OR 97402, USA, Tel: (541) 465-8300. Fax: (541) 335-0504.