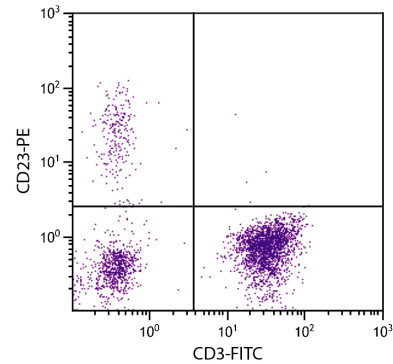




Mouse Anti-Human CD23

Cat. No.	Format	Size
9580-01	Purified (UNLB)	0.1 mg
9580-02	Fluorescein (FITC)	100 tests
9580-02S	Fluorescein (FITC)	25 tests
9580-09	R-phycoerythrin (PE)	100 tests
9580-09S	R-phycoerythrin (PE)	25 tests



Human peripheral blood lymphocytes were stained with Mouse Anti-Human CD23-PE (SB Cat. No. 9580-09) and Mouse Anti-Human CD3-FITC (SB Cat. No. 9515-02).

Overview

Clone	Tü1
Isotype	Mouse (BALB/c) IgG ₃ k
Immunogen	KR3598 cells
Specificity	Human CD23; Mr 45 kDa
Alternate Name(s)	FCεRII, B6, Leu-20, BLAST-2, low affinity IgE receptor
Workshop	III 077, 760; IV B237

Description

CD23 is a 45 kDa type II integral membrane glycoprotein that is the low affinity receptor for IgE. It also binds to CD21 and the α chains of CD11b and CD11c. It is expressed by B cells and monocytes and, weakly, on T cells, follicular dendritic cells, eosinophils, NK cells, Langerhans cells, and platelets. It is upregulated in response to B cell activation, CD40 ligation, or in response to IL-4 or IL-13. CD23 is responsible for regulation of IgE synthesis and may play a role in antigen presentation by B cells and follicular dendritic cells by interacting with CD40.

Applications

FC – Quality tested ²⁻⁵
 IHC-FS – Reported in literature ^{1,6,7}
 ICC – Reported in literature ^{7,8}
 WB – Reported in literature ^{7,9,10}
 Block – Reported in literature ⁷

Working Dilutions

Flow Cytometry	Purified (UNLB) antibody	$\leq 1 \mu\text{g}/10^6$ cells
	FITC and PE conjugates	$10 \mu\text{L}/10^6$ cells
	For flow cytometry, the suggested use of these reagents is in a final volume of 100 μL	

Other Applications Since applications vary, you should determine the optimum working dilution for the product that is appropriate for your specific need.

For Research Use Only. Not for Diagnostic or Therapeutic Use.

Handling and Storage

- The purified (UNLB) antibody is supplied as 0.1 mg of purified immunoglobulin in 1.0 mL of borate buffered saline, pH 8.2. *No preservatives or amine-containing buffer salts added.* Store at 2-8°C.
- The fluorescein (FITC) conjugate is supplied as 25 tests in 0.25 mL or 100 tests in 1.0 mL of PBS/NaN₃. Store at 2-8°C.
- The R-phycoerythrin (PE) conjugate is supplied as 25 tests in 0.25 mL or 100 tests in 1.0 mL of PBS/NaN₃ and a stabilizing agent. Store at 2-8°C. **Do not freeze!**
- Protect fluorochrome-conjugated forms from light. Reagents are stable for the period shown on the label if stored as directed.

Warning

Some reagents contain sodium azide. Please refer to product specific SDS.

References

1. Ziegler A, Stein H, Müller C, Wernet P. Tü1: a monoclonal antibody defining a B cell subpopulation - usefulness for the classification of non-Hodgkin's lymphomas. In: Knapp W, editor. Leukemia Markers: Proceedings of the Leukemia Marker Conference held in Vienna, February 15-18, 1981. London: Academic Press; 1981. p. 113-6. (Immunogen, IHC-FS)
2. Sallusto F, Cella M, Danieli C, Lanzavecchia A. Dendritic cells use macropinocytosis and the mannose receptor to concentrate macromolecules in the major histocompatibility complex class II compartment: downregulation by cytokines and bacterial products. J Exp Med. 1995;182:389-400. (FC)
3. Del Giudice I, Matutes E, Morilla R, Morilla A, Owusu-Ankomah K, Rafiq F, et al. The diagnostic value of CD123 in B-cell disorders with hairy or villous lymphocytes. Haematologica. 2004;89:303-8. (FC)
4. Johnson SE, Shah N, Panoskaltsis-Mortari A, LeBien TW. Murine and human IL-7 activate STAT5 and induce proliferation of normal human pro-B cells. J Immunol. 2005;175:7325-31. (FC)
5. Vaisitti T, Gaudino F, Ouk S, Moscovin M, Vitale N, Serra S, et al. Targeting metabolism and survival in chronic lymphocytic leukemia and Richter syndrome cells by a novel NF-κB inhibitor. Haematologica. 2017;102:1878-89. (FC)
6. Hermes B, Worm M, Nowak F, Kroczeck RA, Stein H, Henz BM. Upregulation of CD40 and CD40 ligand expression in IgE-associated cutaneous diseases. Acta Derm Venereol. 1997;77:441-5. (IHC-FS)
7. Tu Y, Salim S, Bourgeois J, Di Leo V, Irvine EJ, Marshall JK, et al. CD23-mediated IgE transport across human intestinal epithelium: inhibition by blocking sites of translation or binding. Gastroenterology. 2005;129:928-40. (IHC-FS, ICC, WB, Block)
8. Mason DY, Comans-Bitter WM, Cordell JL, Verhoeven MJ, van Dongen JJ. Antibody L26 recognizes an intracellular epitope on the B-cell-associated CD20 antigen. Am J Pathol. 1990;136:1215-22. (ICC)
9. Tu Y, Perdue MH. CD23-mediated transport of IgE/immune complexes across human intestinal epithelium: role of p38 MAPK. Am J Physiol Gastrointest Liver Physiol. 2006;291:G532-8. (WB)
10. Tu Y, Oluwole C, Struiksma S, Perdue MH, Yang PC. Mast cells modulate transport of CD23/IgE/antigen complex across human intestinal epithelial barrier. N Am J Med Sci. 2009;1:16-24. (WB)